

FALL 2013

Billie's Birthday Edition

Trunklines

The Elephant Sanctuary in Tennessee

501 (c)(3) Nonprofit Corporation



Making a Difference

Billie

Changes in the seasons make a difference at The Sanctuary. Greens turn to yellows, reds, oranges, and browns, days get shorter, and cool mornings bring fog to the rolling hills. As the sun goes down earlier each day, the Elephants make their way back to the barns, greeting others upon arrival even though it has only been hours since they parted company. These differences are signs of transition from Summer to Fall at The Sanctuary.

In October, we celebrated **Billie's** 51st birthday, the last of four "milestone" birthdays this year, following **Tange's** 40th, **Dulary's** 50th, and **Shirley's** 65th. **Billie's** life in Sanctuary is very different than it was before her arrival, thanks to the generous support of people like you.

In This Issue

Making a Difference	EleAmbassadors Wanted.. 11
Elephant Update1	Sanctuary Merchandise... 12
Message from the Board...2	2013 Elephant Care Appeal
A Community of Caring7	Sustaining Sanctuary ... 14
Happy Birthday Billie.....8	Adopt an Elephant..... 15
Learning from a Distance .10	Wish List 15
Billie's 51st Birthday	Shirley's 65th Birthday . 15
Celebration 10	Welcome Center Calendar. 16
Supporter Spotlight 11	Membership Info 16

...continued on page 3

Our Mission

The Elephant Sanctuary in Tennessee, founded in 1995, is the nation's largest natural-habitat refuge developed specifically for endangered elephants. It operates on 2,700 acres in Hohenwald, Tennessee—85 miles southwest of Nashville.

The Elephant Sanctuary exists for two reasons:

To provide a haven for old, sick, or needy elephants in a setting of green pastures, hardwood forests, spring-fed ponds, and heated barns for cold winter nights.

To provide education about the crisis facing these social, sensitive, passionately intense, playful, complex, exceedingly intelligent, and endangered creatures.

As a true Sanctuary, the habitat where the elephants live is not open to the public.

To learn more about The Elephant Sanctuary and all of the resident elephants, visit:

www.elephants.com

Message from the Board

As we come to the close of another year, the Board of Directors of The Elephant Sanctuary in Tennessee would like to take this opportunity to express our sincere thanks to all of The Sanctuary staff. From the daily care required for our 14 resident elephants and the maintenance of 2,700 acres of habitat to the processing of donations and the organization of educational programs and Sanctuary events, doing what they do is never easy. The caregivers, vet staff, maintenance department, administrative staff, and management team give it their all, day in and day out, to ensure that our Girls have the best quality of life possible.

Each year brings new challenges and celebrations and our staff continues to meet them head on, with passion and determination. They come here from differing backgrounds and skills with one big thing in common; a deep belief and conviction in the ideals of The Sanctuary. Their dedication to our core mission and all of the Girls in our care make The Sanctuary what it is.

Please join us in extending to our staff a most heartfelt "Thanks!" None of this would be possible without them.

The Board of Directors

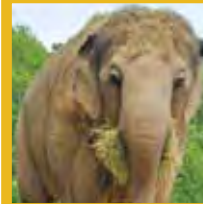
The Elephant Sanctuary in Tennessee



Making a Difference

Elephant Update

Tarra



Shirley



Sissy



Asia Barn and Habitat
Winkie



Misty



Dulury



Winkie

Popsicles are a favorite treat for elephants and Caregivers alike, just in different sizes. **Misty** and **Dulury** emphasized this point one day in September. Staff were excited to present the Girls popsicles of elephant proportions, made out of five gallons of fruit and juice.

When it comes to consuming her popsicles, **Dulury** is a very determined elephant. Caregiver Nicole reported that she first "slurped up all the gooey juices that had accumulated on the top. When she couldn't wrap her trunk around the popsicle

and deposit it directly into her mouth, she pulled it farther into the yard and tried to crush it with her foot. Surprisingly, this didn't work. After spending a minute trying to pull out the frozen fruit with the tip of her trunk to no avail, she started kicking it along the fence line like a

soccer ball. After another minute or so, she pushed it on to its side for another crush attempt – and this time it worked! Fruit and ice chunks exploded everywhere and she quickly started picking through everything to consume her favorites first...the apples of course."

During the warmer months, **Misty** and **Dulury** were going for swims in their pond nearly every day. Early in the year, **Misty** was typically the first one in the water, beckoning for **Dulury** to join her. As summer progressed, the roles reversed, and **Dulury** (perhaps tired of waiting for **Misty** to get up from a nap) even took a few solo swims.

Sissy and **Winkie** still spend most of their time at the Pipeline area in the company of only each other, but occasionally they have had some visitors. In August, Caregivers spotted **Sis** and **Winks** interacting with **Misty** in

...continued on page 4



Dulury and Misty



Sissy



Sissy

Winkie



the North Yard area. North Yard is a trek from the barnyard where Misty spends a lot of her time. Caregivers think that **Misty** traveled there to enjoy the buffalo grass in that area and took advantage of the opportunity to “catch up” with **Sissy** and **Winkie**. The change in weather seems to have invigorated **Winkie** a bit. Not normally known for her speed, she has been spotted running down the Pipeline road, leaving a trail of dust behind her, “in clear violation of The Sanctuary’s 15 mph speed limit,” according to Caregiver Peter.



Tarra has been passing her days in typical **Tarra** fashion – on the move. After days spent out in the habitat, **Tarra** may



reappear near the barn, playfully jostling with **Misty** and **Dulary** or out by the Pipeline corral making her signature

“barking” sounds while **Sissy** and **Winkie** join in with their excited, high pitched bellows. Sanctuary staff refer to **Tarra** as the “Social Butterfly.”

Viewers of the EleCams will sometimes catch a glimpse of the two great ramblers – **Tarra** and **Shirley** – together. They are a very notable pair, our founding elephant and our oldest elephant. **Shirley** is a very independent lady, and she spends more time away from the others than **Tarra**. At 65 years old, **Shirley** is utilizing every inch of her habitat. With the advent of Fall, **Shirley’s** preference in landscapes has been changing from the grassy fields to the woods. Her wobbly frame is easy to recognize as she moves from one location of her own choosing to the next. Caregiver Laurie says that **Shirley’s** actions are a great reminder that “we are in their Sanctuary, not the other way around.”

Africa Barn and Habitat

Tange
Flora

Flora and **Tange** are a special pair. **Flora** is a very independent elephant, having never established close social bonds with other elephants after her capture at a young age. **Tange**, on the other hand, spent nearly her entire life in the company of **Zula**, establishing a bond so close that they were described as “sisters.” **Tange** and **Zula** were the first Africans at The Sanctuary; they were joined by **Flora** later.

In their natural environment, African elephants (and their Asian cousins) live and move in herds. The herd is an extended family unit headed by an older, respected female or matriarch. Herd members grow up together. They learn and accept their individual roles within the herd and their place in the overall herd dynamic over time.

In the beginning, the herd dynamic between **Tange**, **Zula**, and **Flora** was continually evolving. **Zula’s** death in 2009 was a loss felt by the entire Sanctuary family, but none more so than **Tange**. **Tange** and **Flora** have continued to



define their friendship. As evidence of their relationship’s growth, Caregivers have noticed

Tange spending more time alone and not constantly in need of **Flora’s** companionship. **Flora** has become more outgoing and affectionate towards **Tange**, and she is spending more time with **Tange** than before.

Caregiver Cody walked up to a strange sight recently – **Flora** lying down in her yard. “I had never seen either of the Africans lying down

before,” he explained. “They are usually too aware to let any sound go unnoticed before rising to their feet. It was a beautiful sight.” **Flora** and **Tange** have been spending a lot of time up on the Plateau, a vantage point from which they can supervise the Sanctuary Staff driving past. Our cameras often spot them walking there from the barn, stopping to graze along the way. As with all of the Girls, **Flora** and **Tange** have been voluntarily participating in their own health care procedures. After their annual vaccinations in August, **Flora** and **Tange** were rewarded with banana leaves and a Gatorade/fruit popsicle mixture.

Quarantine “Q” Barns and Habitat

Billie
Liz
Frieda
Minnie
Debbie
Ronnie



While most of the Girls in Sanctuary have one best friend and spend their time in pairs, **Billie**, **Liz**, and **Frieda** make up our only trio. They rarely move from one another’s sight. When they do, it is followed by a very vocal reunion punctuated by **Billie’s** trumpets, **Liz’s** chirps, and **Frieda’s** bellows. You’d think they had been separated for days, when in reality it was more like 10 to 20 minutes.

Even within this social unit, each elephant has her own role. “**Billie** is protective of them [**Liz** and **Frieda**],” explains Caregiver Kelly C. “Anytime **Frieda** is getting her foot soak treatments, **Billie** is standing near, keeping an eye on her Sanctuary sister to make sure she is alright.” The same goes when **Liz** is receiving training to prepare her for medical treatments – **Billie** vigilantly stands watch. When **Frieda** strikes out on her own, **Billie** constantly scans the landscape waiting for her to reappear, trumpeting loudly to signal **Liz** when **Frieda** returns into view. Caregiver Kelly C. describes **Frieda** as “the glue that binds



Frieda and Liz in Frieda’s Field

the ‘threesome’ together.” One of **Frieda’s** signature “roars” quickly brings the other two together for yet another reunion.

And where does **Frieda** go when she disappears? To “Frieda’s Field,” of course. Sanctuary Staff worked all Summer to expand the trio’s habitat, giving them additional pasture and wooded hillside. **Frieda** readily took to the new landscape, but **Billie** and **Liz** were more hesitant, with Caregivers offering encouragement all the while. Caregiver Kelly C. fills us in... “**Liz** was only seen in the new habitat a few times the first few weeks after it was opened. However, she was eventually spotted by her Caregivers near **Frieda** on the hillside. She now has two ‘napping trees’ on a little hill in the new area. She faces uphill and leans her rear end against the trees to take her daily afternoon siestas. It is great to see her new napping sites, which allow her to



Billie Liz Frieda

(continued. on page 6)



Frieda and Liz



Debbie

Ronnie

distribute some of her weight from her feet onto the trees. Caregivers were pleased to see **Liz** exploring the hillside behind the barn. **Billie** is still the only elephant that has gone all the way to the top of the hill. She has been spotted there often, sometime grazing alongside the deer that call The Sanctuary home. "Seeing her in new spots so far from the barns, surrounded by the land's natural beauty," continued Caregiver Kelly C, "it seems **Billie** is flourishing."

With an aging herd of elephants, medication is part of the daily routine. Getting an elephant to take her medicine isn't always as easy as just asking. Q Barn staff have been experimenting with different flavor enhancers with varying results. Molasses is a group favorite, along with oats and barley. Sweet potatoes with brown sugar received negative reviews. Barbecue sauce and pickles (a favorite combination of **Dulary's**) also hasn't gained much traction at Q. Peanut butter and jelly sandwiches (as well as peanut butter and jelly separately) are

usually a pretty big hit. The Girls prefer strawberry jelly.

Debbie and **Ronnie** are always seen together. Caregiver Kayleigh describes a typical **Deb** and **Ron** scene, "Since the girls spend a lot of time outdoors in the Summer, they come back to the barns awfully muddy and really in need of a bath... which the girls LOVE. They get really excited, making squeaky noises and rolling around in the water on the stall floors. They also love it when you spray the water directly in their mouths." They have kept their Caregivers busy all summer.

Deb and **Ron** will often visit with fellow Q resident, Minnie, via trunk touches, sniffs, and vocalizations. All three have made great progress in learning how to communicate and interact with each other. Fencing within the habitat allows **Debbie** and **Ronnie** the option of taking a break from **Minnie** and vice-versa. Staff also oversees "socialization" days and nights where all three elephants are able to interact with each other without any barriers between them. ♦



Debbie

Ronnie

Minnie



Billie and two deer



Minnie

Ronnie

A Community of Caring

High Forest Humane Society

Walden's Puddle Wildlife Rehabilitation and Education Center

In 2011 The Elephant Sanctuary established The Bella Fund—a memorial fund to honor Bella's life here at The Sanctuary and her friendship with Tarra, the story that brought joy and inspiration to people the world over. Donations to the Bella Fund have been used to support the ongoing care of the dogs and cats that call The Sanctuary home, as well as the work of other neighboring organizations that care for animals.

The Elephant Sanctuary is one of many "animal welfare" organizations in Middle Tennessee. We are part of a community of organizations working to provide a better quality of life for our four legged, winged, scaled, clawed, and hooved neighbors. This year, The Sanctuary designated two organizations from Middle Tennessee as recipients of awards from The Bella Fund: High Forest Humane Society in Hohenwald, Tennessee, and Walden's Puddle Wildlife Rehabilitation and Education Center in Joelton, Tennessee.

The High Forest Humane Society, a local non-profit organization, was founded in 2004. This group works tirelessly to provide shelter and care for homeless dogs in Lewis County. In addition to finding adoptive homes for these dogs, High Forest Humane Society promotes responsible pet ownership and the humane treatment of all the animals in our community.

The High Forest Humane Society was the recipient of the first Bella Fund award in 2012. This award helped them provide food, shelter, and medical assistance. They were even able to upgrade their transport van, which is used every Saturday to carry these dogs to neighboring cities for Pet Adoption Days! This vehicle even has air conditioning in the back of the van for the dogs – a definite improvement.

Walden's Puddle, a non-profit organization founded in 1989, provides care and treatment to sick, injured and orphaned native Tennessee wildlife. Injured and orphaned animals are brought to them to be cared for and nurtured back to health. Once they have recovered or matured and are ca-



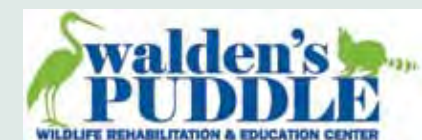
The High Forest Humane Society's Lanette Durham accepts a donation from The Elephant Sanctuary

pable of taking care of themselves, they are released back into the wild. The Elephant Sanctuary has called upon the services of Walden's Puddle on numerous occasions to care for injured or orphaned wildlife found in or near our habitat.

We are grateful for the work and services that these organizations provide to our local community. "Trumpets" to you from The Elephant Sanctuary for your hard work and endeavors to improve animal welfare in Tennessee! ♦

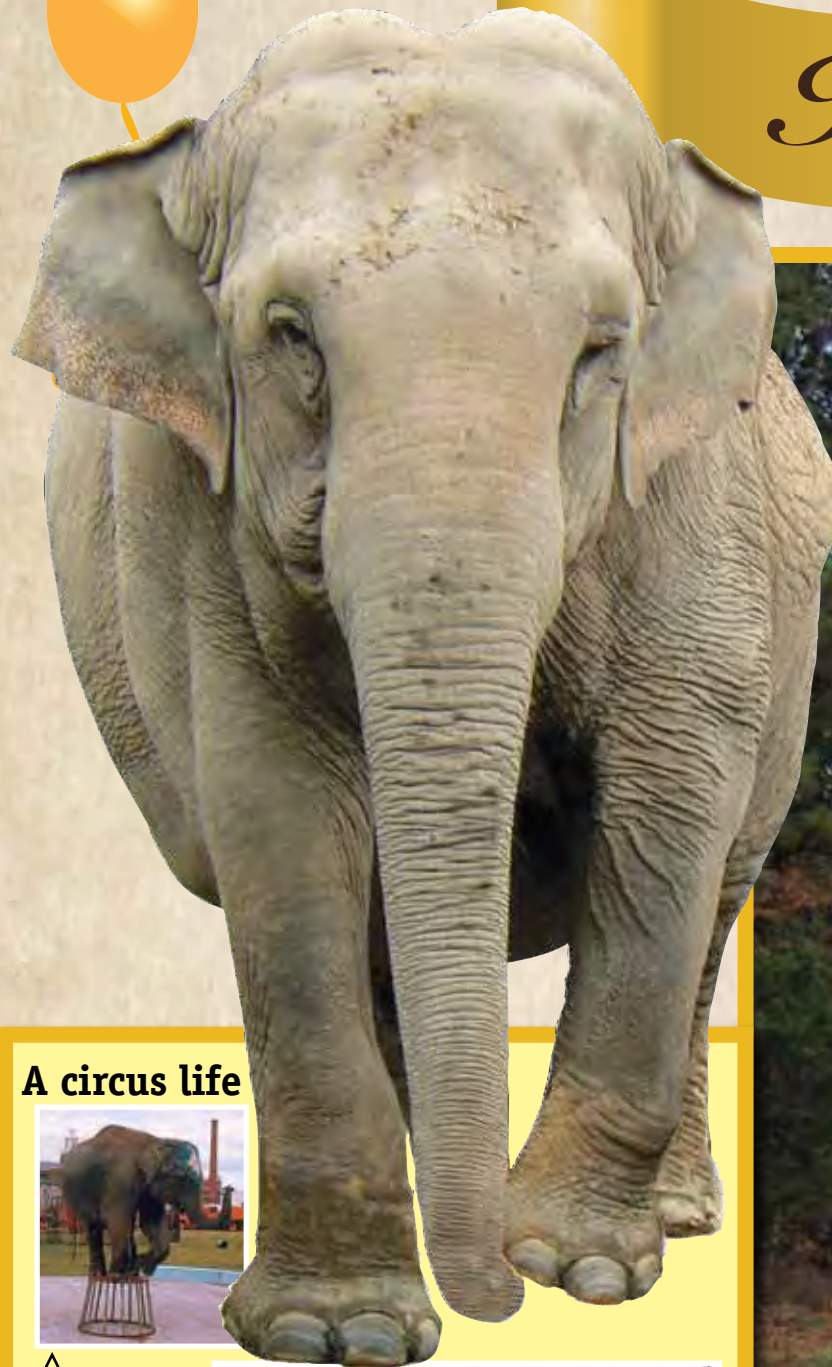
HIGH FOREST HUMANE SOCIETY

1697 Buffalo Rd, Hohenwald, TN 38462
Phone:(931) 796-3258



P.O. Box 641
Joelton, TN 37080-0641 (near Nashville)
Phone: 615-299-9938
website: <http://waldenspuddle.org>

Happy Birthday Billie!



Billie on the left, soon after arrival in February 2006



Liz, Frieda and Billie



On May 4, 2011, with positive reinforcement training, Billie allows her circus ankle chain to be cut off.



October 12, 2013: Billie's 51st Birthday Piñata Celebration

A circus life



A young Billie training for a performance



The Hawthorn Five perform with the Hamid-Morton Circus in mid 1970's.

Born in India

1962

Captured and brought to the Southwick Zoo in Mendon, MA

1966

Sold to John Cuneo-trained in Florida for the circus

1972

Performed with Joyce, Bombay, Tess, and Delhi as the "Hawthorn Five"

1973 - 1993

Attacked trainer. Declared dangerous by USDA and taken off the road to live in the Hawthorn barn in Illinois for 13 years. Her stall was 20 ft by 20 ft.

1993 - 2006

Arrives at The Sanctuary with 7 Hawthorn circus elephants

2006

Sanctuary Caregivers remove Billie's ankle chain, the last reminder of her previous circus life.

2011

2013

Turns
51
in
Sanctuary

Distance Learning

Beaming out live to the world via computer

Aspen
Elementary
School,
Los Alamos,
NM



2013 has been an amazing year for our Distance Learning Programs. We've beamed into 12 schools, summer camps, libraries, and even one hospital located throughout several different states, reaching nearly 800 learners. We want 2014 to be bigger and better. All that is needed to participate is an Internet connection, a computer equipped with a webcam, and a desire to learn. Our programs are a mix of discussion, photos, and live,

streaming video of the Girls in their habitat.

"The children enjoyed the Q & A and hearing stories about specific elephants the most. Seeing the elephants on camera and the videos...helped them appreciate these wonderful animals" – participating teacher. ♦

If you are interested in finding out more or setting up a session for your class or group, contact elephant@elephants.com or call 931-796-6500 ext 101.

Billie's 51st Birthday Celebration

The Elephant Sanctuary celebrated Billie's 51st birthday on October 11-12. October is recognized as "Elephant Awareness Month" by the State of Tennessee, and Billie's birthday events coincided with the annual Oktober Heritage Festival held by the Hohenwald/Lewis County Chamber of Commerce. Over 100 visitors stopped by the Welcome Center on Friday and Saturday to learn more about The Sanctuary and the Girls. Sanctuary staff treated visitors to

a presentation about Billie's life on Saturday afternoon. The first ever Billie's Birthday Fun 5.1K Run had a whopping 72 participants from as near as Hohenwald and as far as Atlanta! It was a great weekend for The Elephant Sanctuary...and for Billie. ♦



The Billie Fun Run



Supporter Spotlight

Liisa Budge-Johnson



Liisa presents The Sanctuary to seniors group.

The Elephant Sanctuary's work is made possible through the donations of its supporters. For many, the word "donation" denotes purchased memberships or other monetary contributions. For others, "donation" means the gift of time, energy, passion, and ideas. These are precious gifts to The Sanctuary, and one donor in particular is getting some special recognition.

Liisa Budge-Johnson's original email to The Sanctuary was pretty straightforward, "I cannot make large donations, but I do have the ability to talk to the public." Her career as a Deputy and the Outreach Coordinator with the Plymouth County (MA) Sheriff's Department required her to spend a lot of time sharing information with the public and speaking in front of groups of people. "I can't remember how I first found out about The Sanctuary," Liisa shared in a more recent email, "I must have read something that directed me to the website (www.elephants.com) ... I was totally hooked."

Liisa (or LBJ as she is known around The Sanctuary office) contacted Sanctuary staff with an offer to share her talents as a speaker and presenter to raise awareness about the elephants that reside in Hohenwald. After receiving some materials and an educational PowerPoint presentation,

Liisa was up and running. As of last count, she has given over 50 presentations to civic clubs, scout groups, faith-based organizations, schools, etc. Many members of those groups are now Sanctuary supporters as a result.

"The most rewarding thing I find is hearing people tell me that they have learned so much in just an hour. Most of us have, in our lifetime, visited a zoo or a circus and enjoyed seeing the elephants; but few, if any, of us think about what it is like for those elephants to get there and what their lives are like. I believe that education can make change." Liisa does not just have the ability to "talk," she has the ability to help, to educate, to make people stop and think, "...and that is very rewarding!" ♦



Liisa and Juanita Eisinger move hay during one of The Sanctuary's Volunteer Days

EleAmbassadors Wanted

Help Us Help Them

Liisa's story is one example of how a person can donate their time and energy to The Sanctuary to help share our mission and our message. One pebble dropped into the pond makes a ripple....many pebbles create a wave of change. We need more volunteers to become EleAmbassadors - representatives raising awareness and support for The Sanctuary in their home communities. The Sanctuary will provide you with all

the information and tools you need to make a difference, and you provide the commitment and time. Help us help them.

Please contact todd@elephants.com or 931-796-6500 ext 101 to learn more. ♦

Elephant Sanctuary Merchandise

Use the order form envelope inside this newsletter or shop online at: www.elephants.com/estore



NEW!

Long Sleeve White T-Shirt \$24.95

Our All-American Tee is 100% made in the USA. The Elephant Sanctuary logo is printed on the chest and www.elephants.com printed down the sleeve.

Adult ☐ (S) ☐ (M) ☐ (L) ☐ (XL) ☐ (XXL)

Jade Dome Logo Tee - \$15.00

Adult ☐ (S) ☐ (M) ☐ (L) ☐ (XL) ☐ (XXL) ☐ (XXXL)

Women's Hot Pink Logo T-Shirt - \$15.00

HOT PINK t-shirt with the Sanctuary logo in white. This is the shirt Kellie Pickler wore on "Day Jobs".

Adult ☐ (S) ☐ (M) ☐ (L) ☐ (XL) ☐ (XXL) ☐ (XXXL)

Elephant Face T-Shirt - \$20.00

Adult relaxed fit. Sanctuary logo imprinted on the sleeve in white. www.elephants.com on the back. 100% cotton. Unisex sizes

Adult ☐ (S) ☐ (M) ☐ (L) ☐ (XL) ☐ (XXL)

Tarra & Bella T-Shirt - NEW COLOR (4-color) \$20.00

Adult Unisex sizes in Blue

Adult ☐ (S) ☐ (M) ☐ (L) ☐ (XL) ☐ (XXL) ☐ (XXXL)

Youth Logo T-Shirts - \$10.00

Jade green or hot pink

Youth ☐ (YS) ☐ (YS) ☐ (YM) ☐ (YL)

Toddler Logo T-Shirts

\$10.00 Pink or blue

Toddler ☐ (2T) ☐ (3T) ☐ (4T)



☐ Denim Bill
☐ Green Bill

Baseball Cap - \$15.00

100% cotton with Sanctuary Logo embroidered on the front and website on the back. Two colors available. Adjustable size.

☐ Nickel
☐ Orange

Distressed Caps - \$20.00

Embroidered with the Sanctuary Logo. Distressed, enzyme washed finish. 100% cotton twill. Adjustable size.

All proceeds benefit The Girls!



Cardinal Red -

Hoodie Sweatshirt - \$39.95

This classy red sweatshirt has The Elephant Sanctuary Logo printed on the front in white. 50/50 cotton poly fleece. unisex sizes.

Adult ☐ (S) ☐ (M) ☐ (L) ☐ (XL) ☐ (XXL) \$42 ☐ (XXXL) \$42

NEW!



Yam colored-Hoodie Sweatshirt

\$60.00 with Sanctuary logo embroidered across the chest. 100% preshrunk ring-spun cotton, unisex sizes.

Adult ☐ (S) ☐ (M) ☐ (L) ☐ (XL) ☐ (XXL)

Zippered Hoodie Gray Sweatshirt \$40.00

(Larger sizes \$42 where noted) Multi-colored Sanctuary Logo embroidered on the chest. 50/50 preshrunk cotton/poly fleece.

Gray w/Color Logo

Adult ☐ (S) ☐ (M) ☐ (L) ☐ (XL) ☐ (XXL) \$42 ☐ (XXXL) \$42

Navy Logo Sweatshirt \$20.00

This classy navy colored sweatshirt has The Elephant Sanctuary Logo printed on the front in white and www.elephants.com on the back. 50/50 cotton/polyester preshrunk. Unisex sizes.



NEW!



Adult ☐ (S) ☐ (M) ☐ (L) ☐ (XL) ☐ (XXL) ☐ (XXXL)

Socks - \$7.00

Dulury & Misty (blue & grey)

☐ (S) ☐ (M) ☐ (L) ☐ (XL)

Tange (orange & grey)

☐ (S) ☐ (M) ☐ (L) ☐ (XL)

note: (S) = Toddler; (M) = Youth; (L) = Women; (XL) = Men



NEW!

Sanctuary Logo Umbrella- \$29.95

48 inch arc - We've got you covered.



2014 Calendar- \$10.00

11 in x 8 1/2 in Full color photos of all the Girls

Elephant Sanctuary Merchandise

Use the order form envelope inside this newsletter or shop online at: www.elephants.com/estore

SALE!

Check online for more sale items!



Shirley Tote Bag

\$15.00

Beige with 4-color imprint



Tarra & Bella Tote Bag

\$15.00

Beige with 4-color imprint



Green Logo Tote Bag

\$10.00

Beige with green Sanctuary logo



Elephant Photo Greeting Cards - \$12.00

Blank inside for all occasions! Four different full color photos of the Girls. 12 cards w/ envelopes.

Elephant Photo Holiday Cards



Tarra & Bella series #8 \$20.00

Inside message "Peace to All Creatures Great and Small"



Winkie and Sissy series #7 \$20.00

Inside message "May your holidays be warm with love, blessed with joy, and bright with promise!"



Pack of 12 w/envelopes Inside message "Peace on Earth, Sanctuary To All" Box includes 4 \$20.00 series #6



Childrens Elephant Art Cards \$12.00

\$8.00 illustrations by Lewis County grade school students Mixed pack of 12 w/ envelopes; Blank inside

Magnets \$3.00

☐ Shirley ☐ Tange ☐ Tarra & Bella ☐ Dulury ☐ Billie



Silicone Wristband- \$5.00

www.elephants.com in white on green bands. Will not fade or chip.

Elephant Sanctuary Mouse Pads \$10.00

☐ Tarra & Bella ☐ Tange and Flora



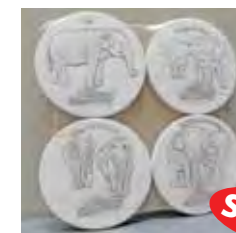
Our Woodland Gallery Pottery mug is handmade in TN! The Sanctuary Logo is imprinted on the side.

Pottery Mug \$25.00



Color Mugs \$10.00

☐ Logo Mug ☐ Tarra & Bella



SALE!

Drink Coasters \$24.00 \$18.00

Handmade clay coasters absorb moisture with NO drips! Set of 4 with images of Liz, Ronnie & Debbie, Tange & Flora and Winkie & Sissy and The Elephant Sanctuary logo. Dishwasher safe. Made in the USA

Pewter Jewelry \$4.99

Made in the USA. Adorable pewter elephants on earrings, pendant and pin.

☐ Pendant 3/4 in tall ☐ Pin 1 1/4 in tall ☐ Earrings

Car Coasters \$12.00

Set of 2 with Sanctuary logo. Fits in your cup holder. Made in the USA



Jewelry Sets -see all online

Made exclusively for The Elephant Sanctuary by Tahiti Beads in Gatlinburg, Tennessee

Set #1 \$39.95

NEW!

Set #5 \$34.95



Brass Bookmark \$8.00 \$6.00

Replica of Tange in the habitat. Frost rhodium finish by ChemArt.

SALE!

Holiday Ornaments \$20.00

Keepsake 3D design made of solid brass in the USA. Comes in its own box with the Sanctuary Logo imprinted on top.

☐ Tange and Flora ☐ Tarra & Sissy

Window Decal \$10.00

Now you can show your support of The Sanctuary by displaying our new logo window decal.

More!

Lots of other merchandise available. Please visit our Gift Shop online at www.elephants.com/estore



Follow the links on our website to order Elephant Sanctuary US Postage Stamps and "Ele-Checks." A portion of proceeds benefits The Sanctuary!

2013 ELEPHANT CARE APPEAL

Sustaining Sanctuary...For The Future of The Girls

We recently mailed you a copy of The Elephant Sanctuary's year end appeal, asking for your support in creating a **Sustainable Sanctuary for the Future of our Girls**. Our green initiatives make us better consumers and advocates for a healthier planet, while providing excellent care to our elephants and reducing our overhead costs. **By making a donation to the 2013 Elephant Appeal, you can help us provide these important items for their care:**

Internal Road – The Girls have access to 2700 acres of habitat, but the Caregivers and Vet staff must exit The Sanctuary property and travel country roads around the perimeter to get from one barn to another. Improvements to internal roads and trails will provide quicker emergency response and save significant time, fuel, and wear-and-tear on vehicles, as well as reduce emissions and be more environmentally friendly.
ESTIMATED COST: \$35,000;
ESTIMATED SAVINGS: over \$22,000 each year.

Solar Waterers –Each elephant needs up to 100 gallons of water per day. Solar pumps for waterers will provide safer, more efficient caregiving and an abundant supply of fresh water from a sustainable power source.
ESTIMATED COST: \$6,600;
ESTIMATED SAVINGS: \$2,000 each year.

Barn Flaps – Rubber flaps are used at barn doors to allow our Girls the freedom to come and go as they

wish while trapping heat in the barn during winter. Asia and Africa Barns need two sets each, and Q Barn needs two sets of clear ones, which will allow more sunlight into the barn, providing an additional source of daylight and Vitamin D for Billie, Liz and Frieda.

ESTIMATED COST: \$9,600.
Any amount towards this would be helpful.

Warming Huts – Warming huts will allow Shirley and the other Girls to stay out in the habitat longer during colder weather. The planned design with solar panels is 100% energy efficient and off the grid! These structures will also provide a shady respite in the summer, and the built-in Protected Contact training wall offers additional locations for performing health care procedures.
ESTIMATED COST: \$60,000 EACH.



Warming hut design

The Sanctuary continues to utilize innovative products and ideas that improve the lives of our elephants and serve to maintain a healthier balance between humans and our planet. The Trunklines you now hold in your hands is printed on 100% Post Consumer Recycled, chlorine-free paper.

With the elephants as our teachers, The Elephant Sanctuary in Tennessee is learning to adapt to our changing world. Our highest priority since 1995 has been to address each elephant's individual needs and to guarantee a safe and healthy environment for their lifetime. Thank you for continuing to make this possible. ♦



Flora on the Africa plateau

Adopt An Elephant



Tange

\$10.00 -

Adopt at the \$10 level and you will receive:

- A Certificate of "Adoption"
- A printed photo of your "adopted" elephant with a full biography telling her amazing story.
- A subscription to The Elephant Sanctuary's electronic news updates, *E Trunklines*, with submission of your email address.

\$50.00 -

With a \$50 donation you will receive:

- A certificate of "Adoption"
- A printed photo of your "adopted" elephant with a full biography telling her amazing story.
- A membership for one year and a subscription to The Elephant Sanctuary's newsletter, *Trunklines*

- | | | | | | | |
|----------|---------|----------|----------|-----------|----------|---------|
| • Billie | • Liz | • Frieda | • Ronnie | • Debbie | • Minnie | • Tange |
| • Dulary | • Misty | • Sissy | • Winkie | • Shirley | • Tarra | • Flora |

Your adoption of an elephant means not only a second chance for these elephants, but also their first taste of life as a member of a family. Thank your for joining our efforts to give them this gift of freedom, companionship and health.

Please use the enclosed envelope/form to designate your gifts. SANCTUARY MUCH!

Wish List

On the website, The Elephant Sanctuary maintains a wish list that is ever-changing to meet the needs of the elephants in our care. You can help by underwriting a specific item. Please go to www.elephants.com and select "You Can Help" from the main menu and choose "Wish List," or contact lorenda@elephants.com. At press time, here is just a sample of some items needed:

ITEMS:

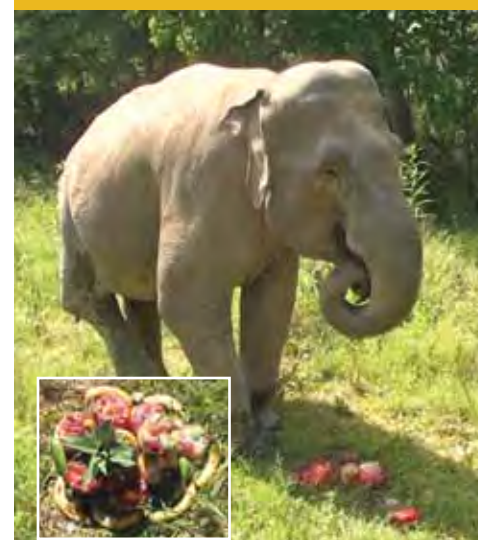
Stihl FS130R Weed Trimmer
 Ratchet Straps
 Sand Clear
 Deep Cut Band Saw Kit
 Nolvasan Solution
 Rasp, 14" Head
 Recycle Bins, 50 gallon

Tyvek Coveralls
 Probiotics Gel, 300 gm.
 Cosequin Equine Powder, 1400 gm.
 Cryovials
 Platinum Plus CJ

We have approved vendors from which we order these items. You can simply help pay for one of these items by check or credit card. Just indicate on your check the item you wish to underwrite and send in the enclosed envelope.

If you have questions, please call Lorenda at 931-796-6500 ext. 105 for more information.

Shirley's 65th Birthday Party



Shirley's icy birthday treat

The Sanctuary would like to extend a well deserved "thank you" to Sanctuary supporters for making Shirley's birthday such a success. Her birthday fundraiser far exceeded our expectations. Visitors who came to The Sanctuary Welcome Center for Shirley's party received a special surprise when Shirley's former keeper, Solomon James, was able to join The Sanctuary via telephone and even led the group in a round of "Happy Birthday." In partnership with The Elephant Sanctuary, the Ouachita Parish Public Library in Shirley's former hometown of Monroe, Louisiana held a party on the same day where Mr. James was the guest of honor and spoke to a crowd of nearly 100 well wishers. Shirley's journey to Sanctuary and her heart warming relationship with Mr. James are featured prominently in the documentary, *The Urban Elephant*, available for purchase in our gift shop and at www.elephants.com. ♦



Solomon James with Shirley in Louisiana before their trip to Sanctuary

The Welcome Center Calendar

The Welcome Center is open to the public every Thursday and Friday and selected Saturdays below from 11 am to 4 pm.

The following special programs are scheduled in the upcoming months at 2:30 pm:

December 21, 2:30 pm "2013 at The Sanctuary"

January 18, 2:30 pm "Sissy's Flood"

February 15, 2:30 pm "Tarra Turns 40"

March 15, 2:30 pm "African Elephants in Sanctuary"

As a true Sanctuary, the habitat where the elephants live is not open to the public.

Become a Member of The Elephant Sanctuary Herd

With just a \$40 donation, you can provide care and feeding for one of our Girls for one day! A \$100 gift can provide distance learning for a school classroom, or a \$500 donation can bring much needed medical care to our aging herd. All gifts have an impact! Consider joining as one of the following:

\$10 EleBacker	\$80 EleFriend	\$500 EleEnthusiast
\$40 EleHelper	\$150 EleAdvocate	\$1000 EleChamp



If you are interested in becoming an EleVIP,
please contact Lorenda Rochelle,
Donor & VIP Programs Manager,
lorenda@elephants.com

• phone 931-796-6500 Ext 105 • Fax 931-796-1360

**For news between *Trunklines* issues,
follow us online!**

eTrunklines:

monthly email newsletter:
sign up on our website or email
elephant@elephants.com



"The Elephant Sanctuary
in Tennessee"



"ELEPHANTSdotCOM"



youtube.com/
elephantsanctuarytn



*To improve the lives of captive elephants,
please contact your legislators.*



**the
Elephant Sanctuary®**
in Tennessee



**We would like to thank our many
corporate supporters including
EMMA E Mail Marketing and B&G Foods**

**Please visit our website:
www.elephants.com**

501 (c)(3) Nonprofit Corporation A financial statement is available
upon written request from the Office of Consumer Affairs.