

TRUNK LINES

SPRING 2020

**THE ELEPHANT
SANCTUARY**
IN TENNESSEE™



NOSEY

Inside The Sanctuary

This spring, The Elephant Sanctuary in Tennessee enters its 25th year, and we celebrate a quarter century of providing sanctuary — a safe, expansive natural space for elephants to explore and rediscover what it means to be an elephant with others of their own kind. With individualized care, room to roam, and opportunities to socialize, we have seen the incredible transformations of 28 elephants. Today with 2,700 acres of rolling hills, pasturelands, and forests dotted with spring-fed ponds, streams, and a 25-acre lake, we are honored to provide innovative care in a unique environment for captive elephants in America. Our current elephant residents make the most of every day. Shirley, now 71-years-old, has ventured farther from the barn this winter than any other in memory, often with Sissy and Tarra in tow. Billie has chosen to sleep on a cushy sand pile under the stars on warmer winter nights. And Nosey, who has lived at The Sanctuary more than two years now, expresses newfound confidence daily as she explores her habitat and interacts with Caregivers.

We look forward to another spring, with warmer weather that gives rise to more opportunities for exploration and growth, in a sanctuary designed to meet the needs of these magnificent and complex creatures.

In This Issue

CEO Letter.....	2
Nosey Updates.....	3
Africa Habitat & Barn.....	4
Q Habitat & Barn.....	6
Asia Habitat & Barn.....	8
Spring Campaign.....	10
Have You Herd?.....	12
International Partners.....	13
Support an Elephant.....	14
Merchandise.....	15

Additional updates on all the elephants living at The Sanctuary are included inside this spring issue of Trunklines.



Observe the elephants via
The Sanctuary's live-streaming
EleCams at elephants.com.

The Elephant Sanctuary is a 501(c)(3) nonprofit corporation, licensed by the U.S. Dept. of Agriculture and the Tennessee Wildlife Resources Agency, accredited by the Global Federation of Animal Sanctuaries, and certified by the Association of Zoos and Aquariums.

Financial statements are available for review at elephants.com.

P.O. Box 393
Hohenwald, TN 38462
Phone: 931.796.6500
Fax: 931.796.1360
Email: elephant@elephants.com

OUR MISSION

Founded in 1995, The Elephant Sanctuary in Tennessee is the nation's largest natural-habitat refuge developed specifically around the needs of Asian and African elephants retired from performance and exhibition. It operates on 2,700 acres in Hohenwald, Tenn. — 85 miles southwest of Nashville.

With Your Support, The Elephant Sanctuary:

- Provides captive elephants with individualized care, the companionship of a herd, and the opportunity to live out their lives in a safe haven dedicated to their wellbeing;
- Raises public awareness of the complex needs of elephants in captivity, and the crisis facing elephants in the wild.

As an accredited sanctuary, the habitat where the elephants live is not open to the public.

To learn more about The Elephant Sanctuary and its resident elephants, connect with us online at elephants.com

LETTER FROM OUR **CEO**

Dear Friends,

Our thoughts have been with you, our friends and supporters around the world, as we try to understand the impact of the COVID-19 virus. At The Sanctuary, the health and safety of our staff, volunteers, animals and community remain our highest priority. As we follow the guidance of the Center for Disease Control (CDC), we have temporarily suspended community and group activities at The Elephant Discovery Center. Sanctuary education staff continue to provide educational and informational programming through Distance Learning. Our professional animal care and facilities staff have maintained their normal schedules, and the elephants are well.

I am happy to report that “Spring Has Sprung” in Tennessee. This week, Shirley ambled out of the barn in her own unique way and traveled far out to the newly blossoming trees and greener grasses near the 25-acre lake in the middle of the expansive Asia Habitat. She is not coming back to the barn at night. Shirley, at 71, has communicated to all of us — Spring Is Here!

Tarra followed Shirley's lead, traveling down “Lake Road” to join her. They have been companions at The Sanctuary for more than 20 years. The other elephants are staying closer to their barns. Sissy, Nosey, Tange, Sukari, Flora, Billie, Ronnie, Debbie, and Minnie have also experienced Tennessee springtime, and they have learned that one bright, warm, sunny day is not always followed by another. We will watch to see if they wait until the leaves are on the trees and the wildflowers bloom in the fields before they venture deeper into the larger habitats available to them. They have the freedom to make that choice. It is their Sanctuary!

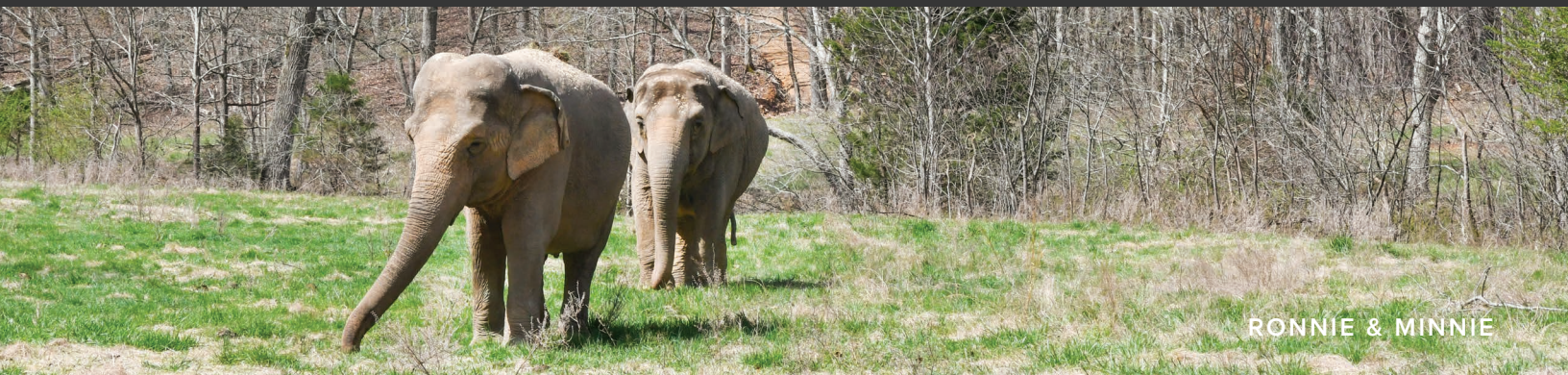
Founded in 1995, The Sanctuary has been home to 28 elephants. This year we are celebrating our 25th anniversary and reflecting on the successes and milestones that have filled the last quarter century. We want to take time to remember every elephant who came to The Sanctuary with their own story and unique personality to find a safe haven and a new life. We remember Barbara, Jenny, Bunny, Winkie, Tina, Delhi, Zula, Lota, Misty, Lottie, Queenie, Liz, Frieda, Dulary, Ned, Hadari and Rosie. And, of course, we must remember Bella, the little dog that made The Sanctuary her home and chose an elephant as her best friend. They each continue to guide our work and inspire our commitment to create a better world for all elephants.

Our deepest gratitude to all of you for making The Sanctuary possible. Thank you for partnering with us to give elephants this forever home and for making sure The Sanctuary is here for those to come.


Janice Zeitlin, CEO



Become a Member—Help Change the Lives of Elephants!



RONNIE & MINNIE



NOSEY

» Nosey Updates

Everyone is pleased to see Nosey grow in confidence and build trust with her Caregivers, seeking out social and tactile opportunities with them. Nosey is very calm and sometimes playful when interacting with Caregivers, often leaning into the Protected Contact wall and resting her trunk on the bars. She is an eager participant in training for Veterinary and Husbandry behaviors and shows a preference for bananas, melon, and jelly beans as “jackpot” rewards.

Nosey is also an eager explorer. After spending a warm night in The Sanctuary’s radiant-heated barn, Nosey is always ready to go outside in the morning and gets very excited when there is new enrichment to discover. During the holidays, Caregivers had fun decorating a full cedar tree with grapevines, cereal, hay, and produce hung via a pulley system in her habitat.

During the winter months when the elephants spend more time in and near the barn, Veterinary and Care Staff plan and carry out annual physical and dental exams. Nosey came to The Sanctuary with a number of health issues, including hyperkeratosis (a thickening of the outer layer of the skin), osteoarthritis, and a bacterial urinary tract infection. After a little more than two years of daily individualized care, specialized treatments including medicated baths and moisturizing, and the freedom to express natural elephant behaviors such as rubbing on trees and rolling in mud, Nosey’s skin condition has greatly improved. Nosey’s persistent health issues are chronic osteoarthritis and abnormal ambulation in her right rear leg, presumed to be caused by long-term stress to her stifle joint (stifle is the joint between the upper leg and lower leg, similar to a human knee). Nosey receives laser

treatments to relieve joint inflammation and is being trained to present her right stifle for radiographs. Because of her abnormal gait, special attention must also be paid to her feet to ensure the pads are evenly maintained. Nosey’s Caregivers were thrilled to report she easily learned to open her mouth for a dental check, and the Vet Team said her molars were in good health.

As we await final decisions regarding Nosey’s legal status, we are planning for her introduction to other elephants. Due to her history of exposure to *Mycobacterium tuberculosis* — as noted in her health records since 2012 — it has been recommended that Nosey remain separated from other African elephants at The Sanctuary who have no history of exposure to TB. Consideration of her health and well-being as well as the health and well-being of the other elephants is a priority.

Nosey currently has visual, auditory, and olfactory social opportunities with Asian elephants Shirley, Tarra, and Sissy, who share her history of exposure to TB. Even with a 25-foot buffer between them, Caregivers often observe the elephants rumbling with ears out, distantly communicating with one another. Our goal for Nosey is for her to have companionship with other elephants and to be integrated into a herd. Providing Nosey with access to other elephants will be a collaborative effort between The Sanctuary’s Veterinary and Husbandry Staff as well as outside experts.

We look forward to watching Nosey continue to build strength and confidence as she expresses natural elephant behaviors in her habitat and communicates with others of her own kind.



TANGE & SUKARI

» Africa Habitat & Barn

Winter in Tennessee is generally mild, and this has been a very wet season. On the rainiest days, the African elephants chose to move far and wide throughout the habitat. During a particularly drizzly week, Care Staff delivered breakfast to the elephants in one location each morning, only to find them in a completely different part of the habitat by dinnertime. On warmer days, all three typically head out to explore before Caregivers can even close the barn gate behind them, eager to enjoy the tall grasses in the valley, take naps in the sun, or venture to the Upper Habitat or the Plateau together. Sometimes Flora or Tange will choose to travel alone, but the herd reunions that follow are accompanied by trumpeting, excited spinning, and loud rumbles.

Sukari and Flora have been play-sparring over the fence line throughout the winter. Sparring is a natural behavior for African elephants, which allows them to test one another's strength, socialize, and release playful energy. Flora, who Caregivers characterize as being the most strong-willed member of the herd, often initiates the sparring. Despite Flora's more dominant personality, she has been very gentle with Sukari as they play, and Caregivers note that Flora often allows Sukari to touch her and drape her trunk over her head, a sign of submission during sparring. Sometimes, Tange stands nearby as if to be the referee, but often she chooses to nap instead.

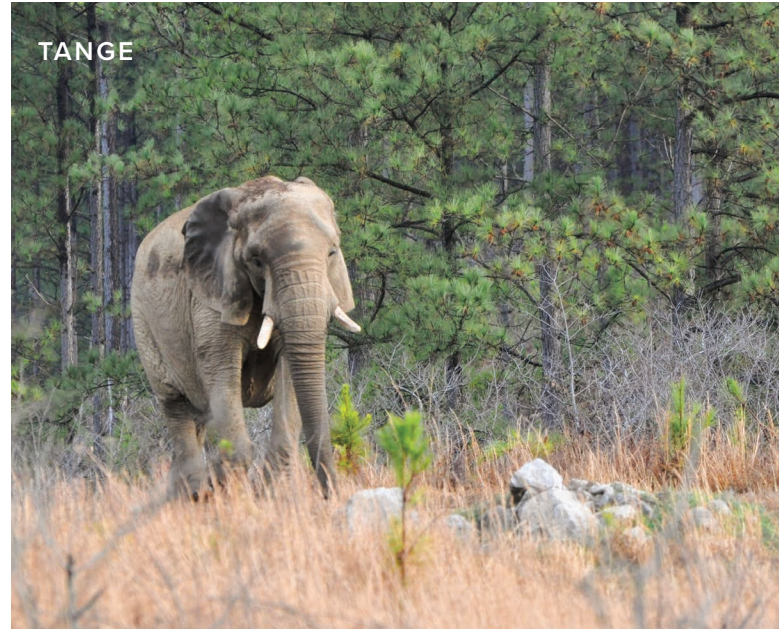


SUKARI



The Sanctuary held its fourth annual Christmas tree drive this winter, collecting 375 trees from donors across Middle Tennessee (including a giant pine from the town square in neighboring Lawrenceburg). Elephants consume approximately 150 pounds of fruits, vegetables, grain, and plant material each day, including Christmas trees, which contain sweet resin that is high in nutrients. Not only does the tree drive provide a food and enrichment source for the elephants, but it also allows the public to participate in eco-friendly practices by keeping less waste from entering the landfill. The African elephants typically devour an entire tree, which is stuffed with hay or produce. Each elephant gets her own tree, but one day Sukari dropped hers, snuck over to take Tange's, and walked away with Tange's tree in tow. Tange playfully followed her around for a few minutes before choosing to eat Sukari's tree instead.

While habitat exploration, socialization, and enrichment fosters the elephants' physical, social, and emotional well-being, The Sanctuary's Husbandry Team also ensures a good bill of health with several routine veterinary practices. Similar to a human or pet, elephants need annual vaccines, and in January, Flora, Sukari, and Tange all received theirs. This year, they were only due for tetanus, but they also receive a rabies booster every few years. In the months prior, Caregivers work to desensitize the elephant to touch and light pressure on the future injection site, so that come time for the real injection, the animal is relaxed and looking forward to her "jackpot" reward, such as a watermelon. Care Staff also maintain a photo diary of monthly foot images to watch for gradual changes through the seasons and monitor any cracks or abscesses, regularly weigh each elephant, and capture dental images with a plumber's camera to inspect their teeth. All of this is part of an individualized care plan designed to best serve each elephant and maximize her well-being.



TANGE



SUKARI & FLORA SPARRING



FLORA



SUKARI



» Q Habitat & Barn

Recent months at Q have been filled with lots of exploring, mudding, and napping. Billie has been taking advantage of all expanses of her habitat, sometimes choosing to sleep on her sand pile in the upper fields instead of making the trek back to the barn at night. Minnie and Ronnie make the most of winter's rainy days; Caregivers observed Ronnie rolling in the mud, spraying water all over herself, and kicking her legs out playfully. When the two reunite with Debbie in the barn after a day of adventures, they all react boisterously, trumpeting and being tactile with one another. Sometimes they are near each other out in the habitat, but still reunite as if they haven't seen each other in days when they come inside.

Minnie, Debbie, and Ronnie have been taking naps outside and often all lie down at the same time, a sign that they are comfortable and feel safe with one another. Ronnie and Minnie have been known to "spoon" in the sun on occasion too! When they aren't spooning, Minnie stands next to Ronnie as if to watch over her while she sleeps. Debbie, affectionately noted by Caregivers as Q's "best napper," napped on the hillside in the rain recently and has been observed sleeping in recumbency — lying down on her side — for up to six hours (four hours in recumbency is considered average for elephants).

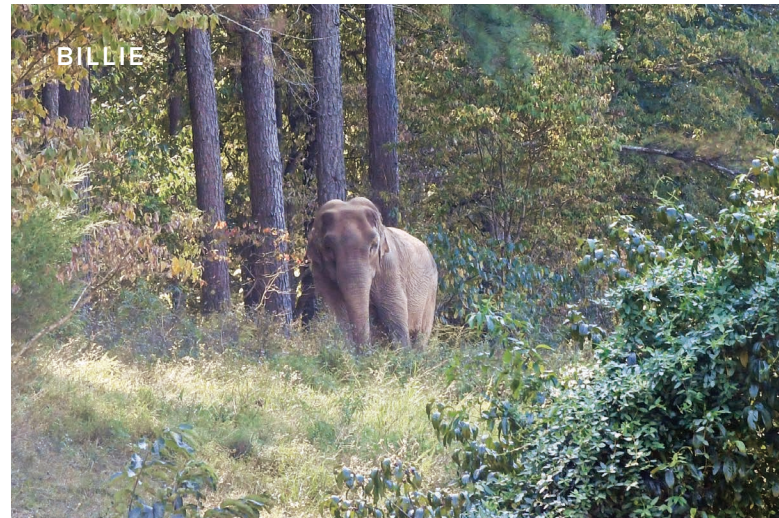




In the cooler months, Care Staff work hard to develop new ways to stimulate the elephants cognitively, promote natural behaviors, and encourage them to move throughout the habitat. For example, Caregivers “hide” Billie’s hay in various places to inspire her to travel up the hill to Frieda’s Field and back again. Of course, she always finds it! A local Tennessee winery donated their grapevine cuttings to The Sanctuary, and these were combined with hay and stuffed in a barrel for the elephants to pull out, similar to foraging in the wild.

Enrichment items like the stuffed barrels are often placed in the barn overnight in case the elephants choose to spend time indoors. Debbie has been seen on the barn cameras on multiple occasions kneeling down on all fours to reach enrichment in other stalls and standing up on gates to grab extra snacks. One night, she popped the lock off the hay cage in the next stall and ate all of the hay after eating the food in her stall! Caregivers are continuously amazed at her determination and creativity.

To meet the needs of The Sanctuary’s aging elephants, Staff are tasked to find innovative solutions. In 2017, the Vet Team designed a treatment of antimicrobial sponges and soft, flexible epoxy — an “elephant insole,” of sorts — to protect Asian elephant Shirley’s feet and heal a long-lasting abscess. This treatment was incredibly successful for Shirley, so the Vet Team worked with Care Staff to modify the process for a chronic abscess on Debbie’s nail. A patch that would not trap bacteria or moisture was needed, so they purchased a variety of products from the local hardware store to test for durability, waterproofness, and flexibility. They found that mesh with epoxy was the perfect combination, keeping the area free of dirt and debris, allowing air flow, and making warm foot soaks possible to further soothe the inflammation. Staff will continue to monitor progress in the coming months and collaborate on new ways to improve the care and comfort of the elephants.





SISSY

» Asia Habitat & Barn

Since Sissy's reunion with Tarra and Shirley in Asia Habitat last fall, the three elephants have been constantly together. Caregivers have been excited to see Sissy and Tarra share enrichment items, a behavior they had not seen before in their many years of observing the habitat-mates. Tarra has always been quick to take all food in sight but one recent afternoon after dinner, Sissy and Tarra took turns eating from a hay ball with their heads pressed on either side of the ball. Some hanging enrichment items are more difficult for Sissy to utilize with her paralyzed trunk, but with the help of Tarra, she is still able to enjoy the goodies tucked inside. Tarra has been seen shaking overhead enrichment items to loosen the treats, allowing some to fall on the ground for Sissy to pick up.

While Tarra and Sissy are seen together daily, overnight footage from the barn cameras have captured Sissy and Tarra standing nearby Shirley as she sleeps — evidence of what close companions these three are. Some mornings, Sissy will stand and wait for Shirley to get up and the two of them will venture outside together.

It has been a mild winter with warmer, drier nights. Sissy, Tarra, and even Shirley have chosen to spend a large portion of their nights outside. Shirley, in particular, has been alert and full of personality this winter — traveling farther from the barn than she usually does in cooler months.



TARRA



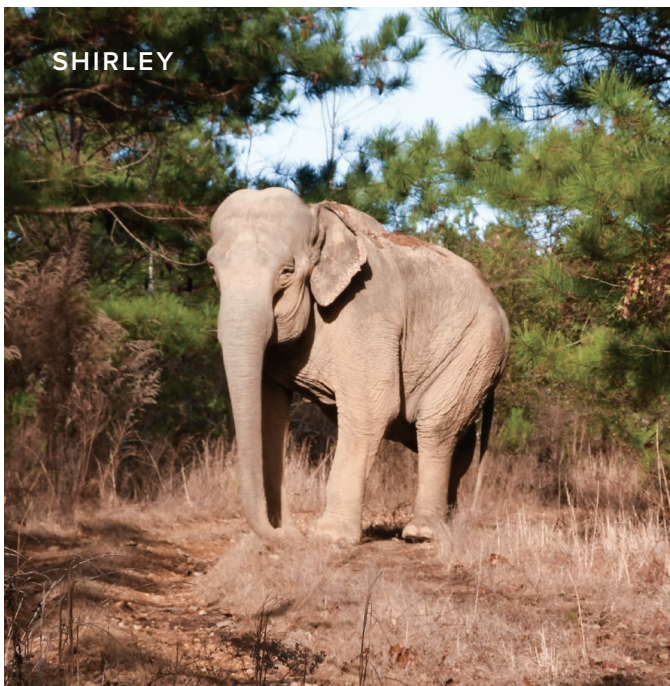
The Sanctuary's Veterinary and Husbandry Teams have been working together to modify Shirley's barn stall to make it as comfortable as possible for her as she rests. Shirley lies down to sleep on a sloped bed of sand for six to eight hours most nights, which is wonderful to see in a 71-year-old elephant. The restful nights give Shirley the energy for her explorations during the day. Because of the odd angle of Shirley's fractured back right leg — a result of an altercation between she and another circus elephant a quarter century ago — Shirley only lies down on her left side. The weight of her body for hours at night has caused a pressure sore on her left hip. The Sanctuary's Vet Team applies cold laser therapy to this spot daily to help with healing. To alleviate the pressure causing the sore, they developed an innovative plan with the assistance of Comfort Research and Toray Fluorofibers, Inc. An eight-layer memory foam mattress has been made for Shirley. It is frictionless, breathable, antimicrobial, and waterproof, and it has been designed to maintain its shape to support Shirley's hip and supply enough cushion for a really good night's rest. The donated durable outer fabric made of Teflon PTFE fibers is the same used in astronaut suits; the interior memory foam layers are made of post-consumer recycled products; and a local company provided the material for the bottom of the mattress and sewed all the components together. We thank everyone who helped make Shirley's memory foam bed a reality, and we look forward to the night she chooses to try it out.



TARRA & SISSY



TARRA, SISSY & SHIRLEY



SHIRLEY



TARRA

A photograph of an elephant named Sissy standing in a grassy field with trees in the background. The elephant is facing right, and its trunk is slightly curved.

CELEBRATING 25 YEARS PROVIDING SANCTUARY: THEN, NOW, & NEXT

SISSY

This year marks The Sanctuary's 25th anniversary. **YOUR partnership ensures a safe, healthy, and stable life for our elephants, who have endured so much.** This is our mission and our goal for all of the current and future elephants in our care, whose stories are varied, but who all share the opportunity for a new life in a refuge dedicated to their well-being.

» THEN

In 1995, it was unheard of to carve out a large space in America for just one species. YOU made the idea to provide safe haven for retired elephants in the rolling hills of Middle Tennessee a reality. Many of you demonstrated vital support in those early years, and followed the tales of transformation in early residents Tarra, Barbara, and Jenny.

With every new resident — 28 elephants in 25 years — you have joined us in support of providing a better life for these animals. You recognize how vital it is that they have the space and the


environment to express natural behaviors, enjoy the companionship of a herd, and receive personalized care tailored to their social, emotional, and physical needs. Freedom of choice to participate in their own health care may seem like a small thing, but it's an enormous shift in what the intelligent species have been permitted to do and demonstrates how they can grow trust and confidence in the right environment. The hardships of dominance-based training and the strains of traveling and performing are now truly in their past.

» NOW

With a quarter-century of lessons learned from the elephants in our care, we know it takes an enormous set of resources to serve these creatures. We provide high-quality hay and restaurant-grade produce for the elephants' balanced nutrition, medical treatments that ease ailments common to elephants living in captivity, and protective reinforced steel fencing that runs over \$100 per linear foot. Upgrading our facilities and improving care options to meet the needs of our lifetime residents, our present is about maintenance, innovation, education, and preparation for the future.

Now, with your support, we are poised to deepen our engagement through immersive educational experiences in classrooms using digital tools, and in our downtown Hohenwald Elephant Discovery Center. Advocates young and old wield influence in their own networks, leading others to action through compassion. Given the global crisis facing both captive and wild elephants, we partner with welfare and conservation agencies working in the field in areas of conflict to improve the conditions of elephants around the world. Simultaneously, our Elephant Health Care Center will be finalized

soon to host our talented Veterinary Team, plus consultants and elephant experts from all over. This provides us the opportunity to share our knowledge and learn from others about improving health for all elephants.

A photograph of two elephants, Sukari and Tange, standing in a grassy field with trees in the background. The elephants are facing left, and their trunks are slightly curved.

SUKARI & TANGE

YOUR PARTNERSHIP ENSURES OUR ABILITY TO PROVIDE FOR OUR CURRENT RESIDENTS AND THOSE TO COME.

» & NEXT

The ongoing costs of providing the best for our residents, current and future, are large. That's why every investment in our mission counts, and The Elephant Sanctuary in Tennessee celebrates YOU for your many contributions throughout our history. Expanding public consciousness of the complex needs of elephants — and how we as people can ensure their well-being — takes a broad coalition of supporters like you.

Partner with us in our continued efforts to provide elephants with the opportunity for renewal here in Tennessee, and to expand awareness of the crisis facing elephants across the globe. With your gift to our 2020 Spring Campaign, you ensure that Sissy, Shirley, Tarra, Tange, Flora, Sukari, Billie, Minnie, Ronnie, Debbie, and Nosey receive rest, refuge and gold standard care for a lifetime. We thank you for joining us in bringing this mission to life for the past 25 years, and carrying it forward for many more years to come. We so appreciate you being part of our herd!

In 2020, your investment counts toward:

Shelter and individualized wellness plans for our **11 elephant residents** in **3 distinct habitats**



7 trailer loads of hay and straw, portioned out daily according to each elephant's nutritional needs



The upkeep and modification of more than **30 miles of habitat fencing**



Collaboration with **10 international partners** on **4 continents**



More than **500 Distance Learning programs** provided to students across the world



Employing a staff of **46 professionals**, who've joined us from **16 different states** to contribute their passion and expertise to this mission



Exchanges with peers from **165 Global Federation of Animal Sanctuaries (GFAS) accredited institutions** and **238 Association of Zoos and Aquariums (AZA) certified organizations**



Giving online is easy and secure at elephants.com

Click "**Donate**" and make a gift to our "**Spring Campaign**"





» Have You Herd?

Education Through Distance Learning

Since 1995, The Elephant Sanctuary has been committed not only to the care of our resident elephants, but also to educating the public about this unique species. The Sanctuary's education program has grown exponentially over 25 years, now reaching tens of thousands of people each year through distance learning, field trips, outreach, and special events. The Distance Learning Lab is the hallmark program of The Sanctuary's educational offerings, reaching more than 14,000 students in 44 states and 26 countries in 2019.

"Distance Learning allows us to bring the name of The Elephant Sanctuary to a truly global audience," says Joy Owens, Education Manager. "The program is accessible to nearly anyone as long as they have an internet connection."

Distance Learning utilizes Skype — a free platform — to connect The Sanctuary's educators with classrooms, libraries, and community centers across the world. Sharing photos and the live-streaming EleCams allows the audience to peek into life at The Sanctuary in an unobtrusive way, offering a new and unique elephant experience. International interest in the Distance Learning program has been especially robust, with a quarter of Skype connections occurring outside the United States.

"By visiting The Elephant Sanctuary, my students had the opportunity to be exposed to authentic English in the real world but also gained a better understanding of the world by becoming more aware of the fact that endangered animals need our help," said Marina Z. of Greece. "The names and the biographies gave them a different perspective of animal rights and welfare."

To schedule your own Distance Learning program, visit elephants.com/distance-learning.



**We are celebrating
our 25th Anniversary at
The Elephant Discovery Center
all year long!**

**For more information, visit
elephants.com/discovery-center.**

Supporter Spotlight

Founded in Costa Rica, **Pura Vida Bracelets** provides sustainable jobs to artisans worldwide and raises awareness for charities with products that give back. In mid-February, Pura Vida launched their 'Save the Elephants' Charm Bracelet, and 5% of the purchase price of each bracelet sold goes to The Elephant Sanctuary! Pura Vida is also passionate about protecting the environment, and package all of their products in biodegradable bags that break down after 180 days when buried. To date, Pura Vida has donated \$2 million dollars to more than 175 charity partners. Thank You to Pura Vida for spreading awareness and giving back to The Elephant Sanctuary!





» International Partners

In early February, The Sanctuary welcomed international partner Dave Morgan, Founder and Field Director of Wild Welfare, a UK nonprofit that collaborates with leading zoos and animal welfare organizations in identifying and improving the welfare of captive wild animals around the world. Dave was joined by Margaret Whittaker, President of Creative Animal Behavior Solutions, who works closely with Wild Welfare and another of The Sanctuary's international partners, Animals Asia.

As shared by Dave and Margaret, grant funds in 2019 empowered Wild Welfare to visit Lok Kawi Wild Park (LKWP) in Kota Kinabalu, Sabah (Malaysia) to conduct a welfare audit on their 14 Bornean elephants; give presentations on the topics of welfare, environmental enrichment, and positive training; and introduce the notion of Protected Contact elephant management. Their time at LKWP was met with such enthusiasm that they were able to accomplish this and much more, including the initiation of PC training with three elephants, designing and building environmental enrichment for numerous wild animal species, and making improvements to leopard and sun bear enclosures.

"Without the support from The Elephant Sanctuary, the type of hands-on visit we conducted at LKWP would not have been possible. Because of the support, we were able to effect changes that benefited 40 individuals representing 10 species. The extra resources allowed us to have a longer visit and provided the opportunity to continue to forge collaborative relationships built on trust and the desire to improve the care and well-being of the animals at LKWP."

Through a generous gift from the estate of Mark Hopkins Schell in 2017, over the last three years, The Elephant Sanctuary in Tennessee has expanded funding to ten international organizations working on four continents to protect elephants in the wild and improve the well-being of captive elephants around the globe.

The Sanctuary's Board reviewed global projects and proposals for elephant conservation and welfare and has awarded gifts to the following organizations in 2020:

» AFRICA

Elephant Voices

To continue work in Amboseli to document African elephant behavior and develop a searchable database, as well as to travel and consult at The Sanctuary in 2020.

elephantvoices.org

Elephants Without Borders

For the continued care of the three orphaned elephants and the addition of one new calf (rescued at the age of two months and requiring critical care), and educational outreach focused on human-elephant conflict.

elephantswithoutborders.org

Stellenbosch University

Continued assistance for research to improve the health and welfare of African elephants.

Utopia Scientific / Caitlin O'Connell / African Elephant Society

For continued research of the long-term dynamic of wild African elephant societies and the implications for conservation.

utopiascientific.org

» AFRICA & ASIA

Working Dogs 4 Conservation

To care and train rescue dogs in global conservation projects in the field in Zambia and Tanzania to enhance safety and rapid response.

wd4c.org

» BRAZIL

Global Sanctuary for Elephants

To help with the expansion of Global Sanctuary Brazil to meet the needs of elephants identified for transfer to sanctuary.

globalelephants.org

» CHINA

Animals Asia Foundation

In support of workshops for staff at 50 zoos in China demonstrating behavioral and protected contact management and enrichment.

animalsasia.org

» MALAYSIA

Wild Welfare

To support work at Lok Kawi Wildlife Park in Sabah, East Malaysia to assess and improve the care and welfare of 14 Bornean elephants.

wildwelfare.org

» EUROPE

Elephant Haven

Underwriting of barn ventilation system in preparation for elephant arrivals at Europe's first sanctuary dedicated to elephants.

elephanthaven.com

» INDIA

Wildlife SOS

In support of the Chhattisgarh Elephant Safety project to analyze GPS data and lead community work to mitigate human-elephant conflict for the protection of wild elephants.

wildlifesos.org



RONNIE

» Support An Elephant

GIVE THE GIFT OF SANCTUARY

Donations of any amount — investments in our mission from long-standing supporters and brand new Shirley fans, alike — help equip The Elephant Sanctuary with the necessary resources to provide gold-standard care to our resident elephants and those to come. When you make a one-time donation online or by mail, you give the gift of Sanctuary and contribute to the large, sometimes unexpected expenses that come with providing refuge to aging elephants. Every dollar counts in creating the best environment for elephants here in Tennessee and improving the lives of elephants worldwide through expanded education and awareness of their needs.

Become a Sustaining Donor for as little as \$10+ per month by setting up an automatic, recurring gift to The Sanctuary.

Your dedication to the continued care of captive elephants and the future generations hoping to share a world with elephants, makes you eligible to apply for a Volunteer Day. Sustaining Donors also receive a one-year subscription to our triannual newsletter, *Trunklines*.

If you wish to set up a bank draft instead of a monthly credit card payment, please contact Kathy at 931-796-6500 ext. 107.

FUNDRAISE FOR ELEPHANTS

Turn your next special occasion (birthday, marathon, wedding, graduation, anniversary, or “just because!”) into a chance to raise support for The Elephant Sanctuary! When you start a peer fundraising campaign — which takes just a minute to set up online with a name, photo and brief “call to action” — you can reach your elephant-loving friends with the mission of The Sanctuary and invite them to participate in changing the lives of the elephants here in Tennessee. Visit shop.elephants.com/create-a-fundraiser to get started.

Dedicate Your Gift:

For a unique gift to celebrate special days or to express sympathy and cherished memories, consider making a donation to The Elephant Sanctuary “In Honor” or “In Memory” of a loved person or pet. Visit shop.elephants.com to learn more.

Other Ways To Give:

To learn more about The Sanctuary’s VIP Membership Program and Shirley’s Legacy Program, contact lorenda@elephants.com or 931-796-6500 ext. 105.

Wishlist:

The Sanctuary maintains an ever-changing wish list to meet the needs of the elephants in our care. Visit shop.elephants.com/products/wishlist to see an updated list of needs.

BECOME A MEMBER

The Elephant Sanctuary provides a sprawling refuge for elephants retired from performance and exhibition — a three-habitat property where they can express natural behaviors, enjoy the companionship of other elephants, and receive a lifetime of individualized care. **Join our herd as a Member with a donation of \$50 or more and receive**

- A one-year subscription to our triannual newsletter, *Trunklines*
- A one-time 10% discount on Gift Shop apparel
- Monthly *EleNews* email updates
- Eligibility to apply for a Volunteer Day in Hohenwald

ADOPT AN ELEPHANT

By adopting one (or more) of The Sanctuary’s 11 elephants, you become a partner in our mission to provide the gift of herd, home, rest, refuge, and individualized care for life. **Make a gift of \$50+ to Adopt An Elephant and receive**

- A Certificate of Adoption and information on your “adoptee”
- Monthly *EleNews* email updates
- Eligibility to apply for a Volunteer Day in Hohenwald
- The latest issue of our triannual newsletter, *Trunklines*

FEED AN ELEPHANT

Each of The Sanctuary’s resident elephants consumes about 150 lbs. of food each day, which costs approximately \$50 per elephant. To ensure a nutritious and balanced diet for each of these elephants, our Veterinary Team and Caregivers portion out hay, browse, fresh produce, and supplements according to the individual needs and preferences of the aging elephants. **When you help us offset these ongoing costs and give \$50+ to Feed An Elephant, you receive**

- A photo card with information about elephants’ diets plus access to “ele-inspired” plant-based recipes, updated seasonally
- Monthly *EleNews* email updates
- Eligibility to apply for a Volunteer Day in Hohenwald
- The latest issue of our triannual newsletter, *Trunklines*.

Elephant Sanctuary Merchandise



Adult T-Shirts

\$24.95

SM, MED, LG, XL, XXL, XXXL

This worn-in vintage-inspired unisex T-shirt is made in the USA from 100% soft-spun cotton. The Elephant Sanctuary logo is printed on the back.



NEW DESIGN!

Nosey T-Shirt

Color: Periwinkle



Flora T-Shirt

Color: Poppy



Tange T-Shirt

Color: Navy



Sukari T-Shirt

Color: Khaki



Sissy T-Shirt

Color: Royal Caribbean



Minnie T-Shirt

Color: Yam



Billie T-Shirt

Color: Blue Spruce



Ronnie T-Shirt

Color: Seafoam



Tarra T-Shirt

Color: Brick



Debbie T-Shirt

Color: Wine



Shirley T-Shirt

Color: Ice Blue



Find Your Herd Original T-Shirt

\$24.95

SM, MED, LG, XL, XXL, XXXL

Looking for your herd? Find it in this new, super-soft 100% ring-spun cotton "Find Your Herd" T-shirt.

Color: Kiwi Green



Find Your Herd Women's T-Shirt

\$24.95

SM, MED, LG, XL, XXL, XXXL

Looking for your herd? Find it in this new, super-soft 100% ring-spun cotton "Find Your Herd" T-shirt. Side-seamed with a contoured body for a feminine fit.

Color: Coral



Find Your Herd Youth T-Shirt

\$18.95

XS, SM, MED, LG, XL

This brand new youth T-shirt distinguishes your child as part of a global herd of elephant lovers. Made by Gildan, this 100% cotton T-shirt is perfect for playtime.

Color: Navy



Reusable Stainless Steel Straws

\$12.00

Stainless steel straw set in a custom biodegradable drawstring pouch featuring The Sanctuary's logo. Contains two straight straws, two curved straws, and a cleaning brush.



The Elephant Sanctuary Caps

\$24.95

This classic, unstructured cap with tri-glaze buckle closure features The Elephant Sanctuary logo. One size fits all.

Color: Black or Stone

Find all your Elephant Sanctuary merchandise at elephants.com, or place your order using the enclosed order form and envelope.



P.O. BOX 393
HOHENWALD, TENNESSEE 38462
ELEPHANTS.COM
931-796-6500



The Big Payback Returns!

Mark your calendars for The Big Payback, which begins at 6 p.m. May 6 and closes at 6 p.m. May 7. The Elephant Sanctuary will participate in this 24-hour online giving day hosted by the Community Foundation of Middle Tennessee, which includes opportunities to vie for monetary prizes. Please join us for the fun! Visit elephants.com on May 6 and look for The Big Payback logo on our home page to make your donation.

Connect with us Online at elephants.com!

Stay current on news from The Sanctuary and support the wellbeing of captive elephants through your favorite social networks. You can also sign up to receive our free monthly online newsletter, *EleNews*, which includes information on special events, merchandise, and new posts to our blog.



Elephant Health Care Center Update

The progress has been steady at our Elephant Health Care Center (EHCC) site, centrally located between Africa, Asia, and Q Habitats. Once the foundational work was completed in recent weeks — including the installation of footers and electrical piping — this flat expanse was primed for swift construction of both buildings that comprise the EHCC, the two-stall elephant barn and vet lab/meeting space. Thanks to the generosity of The Oliver Foundation, the lab will be outfitted with world-class diagnostic equipment that improves our in-house capabilities for providing responsive, individualized care to each elephant. Also, once both exterior structures are completed and the interior buildout is underway, reinforced steel fencing will be installed, enclosing the 3.6-acre EHCC habitat.

Awards and Recognition

Our strong performance as an animal welfare/wildlife conservation 501(c)(3) non-profit is recognized by reputable charity monitoring groups.



Global Federation of
Animal Sanctuaries

ASSOCIATION
OF ZOOS &
AQUARIUMS

The Elephant Sanctuary in Tennessee is proudly accredited by the Global Federation of Animal Sanctuaries and certified by the Association of Zoos and Aquariums.

Trunklines is printed on paper certified by both the Rainforest Alliance and the Forest Stewardship Council. FSC wood products are known to prevent decimation of forests located in or near native habitats for wild elephants.

Please be a conscious consumer—look for FSC, Rainforest Alliance, and RSPO seals.

