

TRUNK LINES

FALL 2020

 **THE ELEPHANT
SANCTUARY**
IN TENNESSEE™



FLORA

Inside The Sanctuary

As the seasons turn, we are reminded that change is inevitable and when embraced, creates the possibility for incredible growth and transformation. Like the rest of the world, The Sanctuary has embraced many changes this year. New protocols were put in place to ensure the health and well-being of both the elephants and their human Caregivers, we found new and innovative ways to expand our educational outreach virtually, and together, we discovered the true meaning of resiliency.

Although the world has changed, Sanctuary for the 11 elephants in our care has remained constant thanks to our dedicated staff and incredible supporters around the world. African elephant **Nosey** has continued to thrive in a Protected Contact setting, gaining confidence daily through exploration of her Sanctuary habitat. Asian elephant **Ronnie** has shown adaptability as she participates in her own health care so she can continue comfortably dusting, grazing, and exploring beside her closest companion, **Debbie**. And Care Staff continue to be in awe of 72-year-old **Shirley's** playful and determined nature.

In This Issue

CEO Letter.....	2
Nosey Updates.....	3
Africa Habitat & Barn.....	4
Q Habitat & Barn.....	6
Asia Habitat & Barn.....	8
Year End Campaign.....	10
Conservation in Action.....	12
Virtual Awareness Building.....	13
Support an Elephant.....	14
Merchandise.....	15

Additional updates on all the elephants living at The Sanctuary are included inside this fall issue of Trunklines.



Observe the elephants via
The Sanctuary's live-streaming
EleCams at [elephants.com](https://www.elephants.com).

The Elephant Sanctuary is a 501(c)(3) nonprofit corporation, licensed by the U.S. Dept. of Agriculture and the Tennessee Wildlife Resources Agency, accredited by the Global Federation of Animal Sanctuaries, and certified by the Association of Zoos and Aquariums.

Financial statements are available for review at elephants.com.

P.O. Box 393
Hohenwald, TN 38462
Phone: 931.796.6500
Fax: 931.796.1360
Email: elephant@elephants.com

OUR MISSION

Founded in 1995, The Elephant Sanctuary in Tennessee is the nation's largest natural-habitat refuge developed specifically around the needs of Asian and African elephants retired from performance and exhibition. It operates on 2,700 acres in Hohenwald, Tenn. – 85 miles southwest of Nashville.

With Your Support, The Elephant Sanctuary:

Provides captive elephants with individualized care, the companionship of a herd, and the opportunity to live out their lives in a safe haven dedicated to their wellbeing;
Raises public awareness of the complex needs of elephants in captivity, and the crisis facing elephants in the wild.

As an accredited sanctuary, the habitat where the elephants live is not open to the public.

To learn more about The Elephant Sanctuary and its resident elephants, connect with us online at elephants.com.

LETTER FROM OUR CEO

Dear Friends,

As we prepare for the closing of year 2020, we hope you and your loved ones are safe and well. We know this has been a year fraught with uncertainty, bringing new challenges to each and every one of you. It is with deep gratitude that we thank you, our supporters, for your extraordinary dedication to the elephants in our care and to our continued efforts to improve the welfare and conservation of all elephants.

The Elephant Sanctuary Board and Staff started this 25th anniversary year with our target on the work needed to plan and implement a new strategic plan for 2020 - 2025. Throughout the planning process, we kept the focus on "creating a better world for all elephants." As we move forward, our mission remains two-fold: to provide care and safe haven for elephants coming to Sanctuary, and to raise public awareness of the challenges facing elephants around the world.

In March, just one month after approving the new five-year strategic plan, the world changed for everyone. Our focus, as for many of you, shifted from a larger worldview to our place in this world and the people around us. The priority has been the safety of Staff and the continued care and safety of the resident elephants. Sanctuary Staff has adapted to new rules for increased safety, worked to identify and act on ways to meet the changing needs of elephants in our care, and found new ways to engage with students and teachers outside the classroom. They have accomplished so much, made many steps forward, and they have done this without disruption to the day-to-day lives of the elephants. Shirley spent this year's warm days and nights in her favorite places by the lake, with daily visits from her herd mates, Tarra and Sissy. Nosey gained access to new areas of habitat and expanded her horizons, Billie found time to splash and roll in the pond, and Flora continued to do whatever she chose to do, whenever she wanted to do it. While the world struggled to find its "new normal," it has been spring, summer, and fall as usual in Sanctuary. And **YOU** have made this possible.

We believe that elephants are intelligent creatures with complex physical and social needs, deserving nothing less than best care in captivity and protection in the wild. We know you believe this too, and we know that together we can and must make a difference. Thank you for partnering with us, and thank you for your continued support. We wish **YOU** all the very best in 2021!


Janice Zeitlin, CEO



Thank you for supporting our mission!



BILLIE



NOSEY

» Nosey Updates

Throughout the late summer and into fall, **Nosey** has continued to explore habitat areas new to her. Several new areas were opened up to her this summer, expanding her choices for where to graze, nap, dust, and explore. She has been observed walking from the far end of one new habitat to another within an hour's time, grazing on a variety of grasses along the way. With access to these new spaces, Nosey now has opportunities to socialize with Shirley, Tarra, and Sissy over a buffer zone through sight, sound, and smell. One recent morning, Nosey was spending time near the fence line where Tarra and Sissy were grazing. All three elephants were heard rumbling, and Tarra even began making her signature "barking" sound, a common occurrence when she is excited.

Caregivers report that Nosey continues to enthusiastically engage with them on training behaviors, allowing Staff to provide individualized care in a Protected Contact setting. She has been learning to "come in line," or line her head up with the trainer, standing perpendicular to the training wall. This behavior is used to examine the elephant's body at different angles or to reposition before asking to lift a front foot. Positive reinforcement and food rewards are given throughout training sessions and after to express a job well-done. Nosey's favorite foods include bananas, melon, sweet potato, and carrots.

Nosey also regularly works with Caregivers on tusk presentation behavior, giving Vet Staff the opportunity to examine and take radiographs of her tusks. Tusk health, much like dental health in humans, is important to the elephant's overall health and well-being and requires regular check-ups.

Nosey's tusks are the longest of the four African elephants living at The Sanctuary, and the ends are thin and delicate. As Nosey continues to explore the habitat and express more natural behaviors such as digging, lifting, and pushing, Vet and Husbandry Staff will watch closely to see if her tusks wear down naturally or, like many captive African elephants, require intervention to strengthen them and maintain their health.

NOSEY





TANGE & SUKARI

» Africa Habitat & Barn

Each change of season brings about changes in elephant movement, diet, enrichment, daily routines, and more.

As the weather begins to cool, the elephants move closer to the barn. They still venture out and explore their habitats each day, but they often seek out the heated barn in the evening. African elephants usually lie down and sleep for three to five hours a night. The remainder of their rest is achieved through standing “power-naps” throughout the day. This leaves many waking hours in the night during which the elephants will eat and engage with enrichment inside the barn. In the summer months, enrichment may be offered in the habitat in the form of fire hose baths and elephant-sized popsicles made from five-gallon molds. In the fall and winter, enrichment looks different. Tires, barrels, hay nets, and hay balls are used to increase foraging time and keep the elephants stimulated.

In warm-weather months, **Flora**, **Sukari**, and **Tange** spend up to 18 hours per day foraging and eating. When the nights become cooler, and the elephants choose not to venture from the barn at night, Caregivers will incorporate a “night feed” into their daily schedule with new enrichment items.

FLORA





During the day, Caregivers prepare multiple enrichment items filled with hay and produce, as well as several pieces of browse for each elephant. Every night, Caregivers return to the barn at 10:00 p.m. to give the elephants the items that were prepared earlier that day. They are often met with rumbles of excitement.

Every stall in the barn is equipped with a camera that is motion activated. During the fall and winter months, it is part of the Caregivers' daily routine to review the footage captured overnight to observe how the elephants are utilizing the enrichment items and ensure the intended goals are being met. Barn camera footage also gives us a glimpse into the elephants' behaviors when Care Staff are not around. Notes are taken on how long each elephant lies down to sleep every night, which side they sleep on, which enrichment items they interact with the most, which items take them the longest to use, and more. Without intruding on the elephants, the cameras allow Staff to gather useful data and tailor care for each individual elephant.

In addition to the changes in elephant and Caregiver routines, Staff also has an extensive to-do list when it comes to preparing the barn for winter. They ensure all barn enrichment items are clean, organized, and free of damage from the previous winter. Summer items, such as sprinklers and box fans, are stored for the season. All heating components within the barn are tested to ensure that they are in working order, and defrosters are added to all outdoor waterers.





BILLIE

» Q Habitat & Barn

Billie explored far reaches of the habitats this summer that she had not visited in a very long time. Staff were excited to see her spend days at a time near South Pond and Bunny's Trail, sleeping on a sand pile by the pond overnight rather than making her way back to the barn to sleep. The recent addition of a new automatic waterer in that area ensures she always has fresh water to drink in these new locations, while meals are delivered and available to her from across the fence line. "It's always nice to see the elephants utilize their choice and control to determine when and where they'd like to spend their time. Billie never ceases to amaze us with how confident she is becoming both in her habitat exploration and socialization," said Brandi R., Q Barn Lead.

Toward the end of summer, **Ronnie** began demonstrating increased stiffness in her right front leg. Care Staff worked with her on presenting her leg for examination, taking time to make sure she was comfortable and at ease. They took a page out of Shirley's playbook and borrowed her foot care block, which allows Ronnie to rest her foot on a block of wood while her leg is examined and X-rays are taken. After consultation with a zoological radiologist, it was confirmed that Ronnie had partially torn tendons in her elbow. With a confirmed diagnosis, The Sanctuary's Vet Team implemented a treatment plan that included laser and massage therapy. Care Staff made sure additional dirt



MINNIE



piles were added to the habitat so that Ronnie could continue to dust herself without having to use her leg to dig up dirt from the ground. Ronnie has been cooperative with Vet and Husbandry Staff and continues to explore her new and improved habitat, enjoying regular dustings.

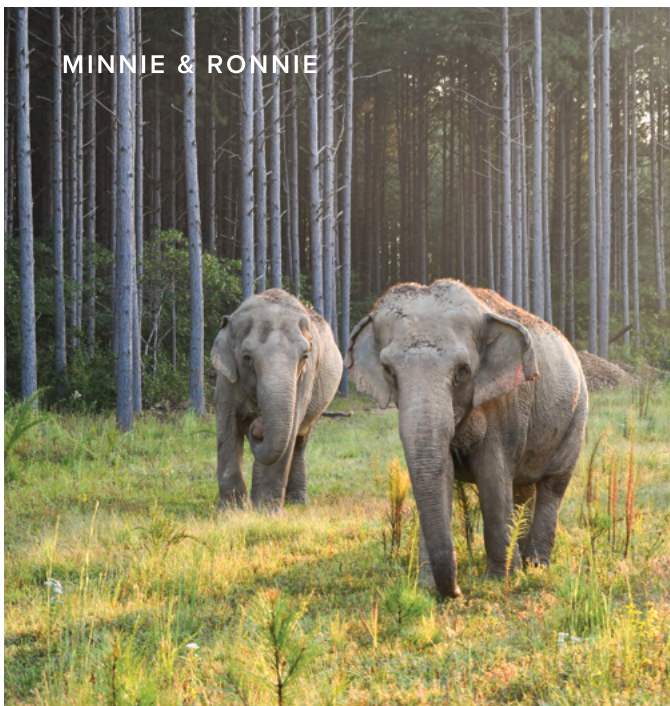
The Sanctuary works to ensure that the elephants' evolving needs are met as they age, which often includes updates and changes to facilities. The Q Barn is situated somewhat higher than the surrounding habitat, requiring the elephants to travel uphill when entering the barn. This year, Care Staff observed that on rainy days, this hillside would get slick, and some of the Q elephants experienced difficulty traversing it. To solve this challenging problem, The Sanctuary's Facilities Team was called in to re-grade the hill, making it less steep and easier on the elephants' aging joints. Inside the barn, Care Staff noted that **Minnie** and **Debbie** were becoming less agile, sometimes requiring more time to maneuver between stalls. The Facilities Team again assisted with this challenge, making these transitions easier for the two "heavier-set" elephants by widening the chute gates separating individual barn stalls. Adjustments like these make life easier for the elephants and speak to the many creative ways Staff from various departments work together to ensure the elephants are receiving the individualized care and attention they need and deserve.



DEBBIE & RONNIE



BILLIE



MINNIE & RONNIE



DEBBIE



SHIRLEY

» Asia Habitat & Barn

The warmer summer and fall months at Asia Habitat are marked by ample elephant explorations, and this year was no different. **Shirley**, **Sissy**, and **Tarra** traveled far and wide across the habitat, and every day, Caregivers are excited to observe where each of them chooses to spend her time. They use footprints, dung, and environmental clues such as a felled tree or broken limb to track where the elephants have ventured overnight and how they utilize their habitat during the day. With over 1,600 acres to roam at Asia Habitat, it is always a surprise!

Shirley spends most of her days at The Sanctuary's 25-acre lake, moving from field to field in the area surrounding the lake and dining on fresh grasses as she goes. She pulls the grass up by the root, eats the delicious green top off the bunch, and then pitches the rest to the side with her trunk before moving on to the next bunch. Caregivers have also spotted a bald eagle perched nearby, watching her eat. Occasionally Shirley travels up the hill to North Trough or Turtle Pond Pasture with Tarra, but she typically returns to the lake within a couple of days.

One day, Shirley was standing quietly in the woods. She turned to face Caregivers, with her ears out, acknowledging their presence and then started gathering trunkfuls of leaves to throw on herself. She did this for five minutes before walking to a nearby tree,



SISSY



rubbing her side and back against it for a quick scratch. After her massage, she walked halfway to her breakfast, stopping at a perfect pile of dirt to dust herself. Once she was fully coated, she took the final steps to her food and began eating. Caregivers affectionately call Shirley the “master procrastinator” and often say that their schedules are on “elephant time” — meaning everything Staff does is at the elephant’s leisure and is based on her freedom of choice.

Tarra continues to be Asia Habitat’s most well-traveled elephant, meandering the habitat day after day and always making time to check in with Shirley and Sissy! Sissy is often found in the Second Pipeline area, but she and Tarra have also recently been grazing Dr. Scott’s Field together. Habitat sections are descriptively named to help Care Staff navigate The Sanctuary’s expansive property and log each elephant’s travels. They use a variety of methods to name each area — some are named after a specific elephant or a significant person (for example, Dr. Scott’s is named after The Sanctuary’s Director of Veterinary Care, who celebrated 25 years of service this year), while others are based on a feature of the landscape, the acreage, or cardinal location.

SHIRLEY



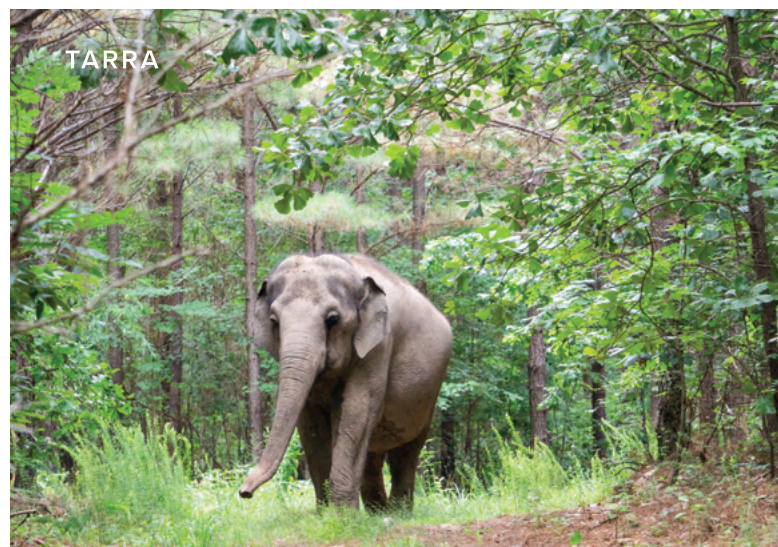
TARRA



SISSY



TARRA



2020 YEAR END CAMPAIGN

PROVIDING STABILITY, SECURITY, & COMMUNITY



FLORA

African elephant Flora has set the rhythm to her days at The Elephant Sanctuary in Tennessee for more than 16 years. Without the demands of her past life of performance and traveling, she now employs freedom of choice about how and where to spend her time. A strong and confident elephant, Flora is often spotted navigating the rolling hills of her 300-acre habitat and expressing behaviors natural to her species, like pushing down trees and playfully sparring with her habitat mates, Tange and Sukari. **“Flora approaches life head-on and faces every new experience with determination and fire,”** says Africa Barn Caregiver Jessica, who joins fellow Husbandry and Veterinary professionals to use positive reinforcement with Flora, earning her trust and enthusiastic participation in her own care.

» Sanctuary Means Stability

Flora’s story is like many of the 28 elephants who have found safe haven and care at The Sanctuary in its 25-year history. Imported from Africa as a young calf, Flora spent two decades as the star of the namesake Circus Flora, founded by Broadway play producer David Balding in 1985. While Flora performed for audiences in the Midwest and along the East Coast, her owner considered that Flora deserved a different life.

The thoughtful decision made by David Balding to retire Flora to The Sanctuary in March 2004 — joining recent arrivals Tange and Zula — meant a new forever home with stability and the social benefits of a herd. But it is only through the generosity of **YOU** and our thousands of supporters worldwide that this former circus performer continues to live peacefully with the companionship of others of her species.

» Sanctuary Means Security

The Elephant Sanctuary is a lush, 2,700-acre protected area where every shady spot, every mud wallow, and every trail is made available to the 11 elephants in our care. At The Sanctuary, we celebrate as our retired elephants thrive in this space dedicated to their well-being, including the soon-operational Elephant Health Care Center complex for observation and diagnostics. With immense freedom to explore, play, and also rest without external threats or demands, elephants at The Sanctuary are secure, in some cases for the first time in their lives. This is a place where Asian elephant Billie can lazily reach for a midday snack of branches and leaves while simultaneously splashing around shoulder-deep in a pond. In a nearby pasture, companions Debbie and Ronnie can leisurely stroll through the morning dew and take full advantage of their lifetime home.

DEBBIE & RONNIE

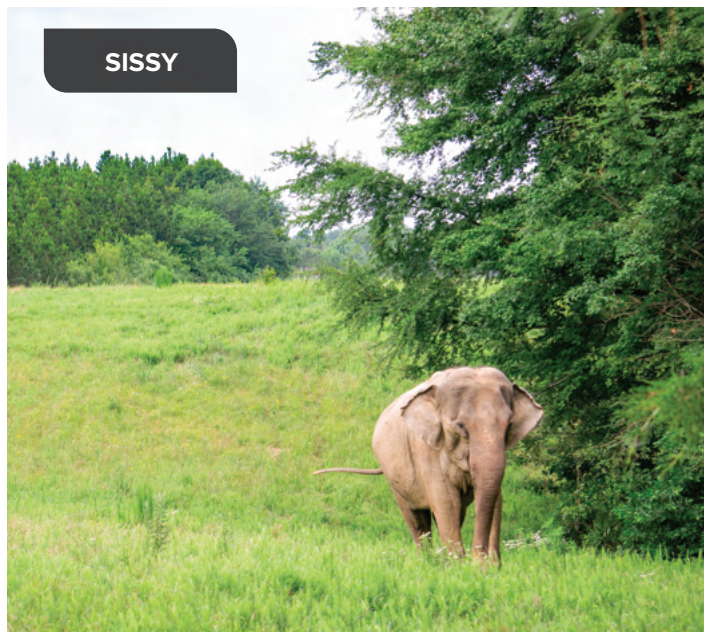


By partnering with 10 elephant welfare conservation organizations on the continents of South America, Africa, Europe, and Asia, we are supporting work to reduce threats to wild elephants and improve the welfare of captive elephants globally. Projects to which The Sanctuary contributes include caring for orphaned elephant calves in Botswana, tracking elephant herds and deploying an early warning system to prevent human-elephant conflict in India, expanding refuge for retired elephants in Brazil, and sponsoring Protected Contact training for zookeepers in Malaysia and China. Your 2020 investment in our work enhances the efforts of amazing organizations working for elephants worldwide.

YOUR PARTNERSHIP ENSURES OUR ABILITY TO PROVIDE FOR OUR CURRENT RESIDENTS AND THOSE TO COME.

» Sanctuary Means Community

Hohenwald, Tennessee may seem remote, but The Elephant Sanctuary founded here in 1995 values its connectedness to the global community. Our elephant residents have hailed from faraway places including Myanmar and Zimbabwe — forming lasting bonds with each other in nonfamilial herds — and supporters of our mission follow us from every state and many countries around the world. Remaining connected through Distance Learning sessions and our live-streaming, solar-powered EleCams, young people learn what they can do to make a better world for this keystone species. In 2019, more than 14,000 students linked up with our Education Team, and 2020 has offered additional opportunities to reach children and adults virtually with a slice of serenity and a call to action.



Despite the uncertainty this year, **YOU** continue providing for elephants and the world these incredibly intelligent and social beings inhabit. The Elephant Sanctuary staff and volunteers are so thankful to partner with you in this noble venture of providing stability, security, and community throughout our 25th anniversary year and beyond. On behalf of Flora, Tange, Sukari, Nosey, Shirley, Sissy, Tarra, Billie, Minnie, Debbie, and Ronnie — and elephants to come — we thank you for your contributions, the well-wishes you send, and your enthusiastic sharing of our work.

gifts to our 2020 Year End Campaign

provide stability, security, and community in the forms of:



\$10

Canned pumpkin for elephant nutrition



\$25

Coconut oil for elephant skin treatment



\$50

Medicated epoxy bandages for Shirley's feet to promote healing and encourage habitat exploration



\$100

Technology to provide elephant education for K-12 students across the world



\$500

Sand piles for elephant comfort and play



\$1000

Ongoing fencing upgrades to keep elephants and staff safe

Giving online is easy and secure at elephants.com

Click “Donate” and make a gift to our “Year End Campaign” by **December 31st!**

SUKARI





FOUR-TOED SALAMANDER

» Conservation in Action

Partnership with the Tennessee Wildlife Resources Agency

This spring, The Elephant Sanctuary combined forces with the Tennessee Wildlife Resources Agency (TWRA) on a special conservation study and multi-species wildlife survey on Sanctuary grounds to better understand the habits, population status, and ranges of some of Tennessee's most rare native species. With the idea that The Sanctuary not only provides a haven to elephants but also to many Tennessee native wildlife species, a proposal was formed, and we teamed up with members of the Wildlife Diversity Division of TWRA. Based on research, topography, and habitat range, TWRA presented four target species as the main objective of the survey. The four species are the Northern Pine Snake (*Pituophis melanoleucus*), Pygmy Rattlesnake (*Sistrurus miliarius*), Eastern Spotted Skunk (*Spilogale putorius*), and the Four-Toed Salamander (*Hemidactylium scutatum*).



To Date We Have:

- Caught and released 80 individuals
- Identified 31 different species
- Collected 9 snake fungal disease samples for research (7 for Middle Tennessee State University, 2 for Tennessee State University)
- Caught and identified 1 of the proposed target species for which the project was generated, the Four-Toed Salamander (*Hemidactylium scutatum*).



Multiple survey sites were set up all throughout The Sanctuary to include humane, noninvasive funnel traps, wildlife cameras, and artificial cover. Not only did this project allow The Sanctuary to partner with an outside conservation organization, but it allowed several different internal departments to work together. The Sanctuary's Facilities Team worked with TWRA to map out and modify the sites for equipment, and teams of two were established to carry out the project, including Staff from various departments.





WILDLIFE SOS (INDIA) ELEPHANTS

» Virtual Awareness Building

Bringing the World Together for Elephants

World Elephant Day

This year, The Elephant Sanctuary celebrated World Elephant Day on August 12 by hosting a free, family-friendly virtual event to raise awareness about The Sanctuary's work and the work of our international partners. World Elephant Day is an international event that aims to bring people together to envision solutions to the crisis facing elephants globally.

The Sanctuary's Education Team conducted Facebook Live interviews with Carol Bradley, author of *Last Chain on Billie: How One Extraordinary Elephant Escaped the Big Top*, which tells the life story about Sanctuary resident, Billie; as well as four of The Sanctuary's international partner organizations, Working Dogs for Conservation (Africa and Asia), Elephants Without Borders (Africa), Wild Welfare (Malaysia), and Wildlife SOS (India).

You can read more about The Sanctuary's international partners at elephants.com/international-outreach, and replays of the interviews are available at facebook.com/elephantsanctuarytn and youtube.com/elephantsanctuarytn.

In addition, The Sanctuary's supporters were asked to take an online pledge to take action for elephants. By the day's end, more than 520 pledges had been made to speak out, shop smart, go green, and travel responsibly. You can pledge to take action for elephants at elephants.com/take-action.

Elephant Awareness Month

In recognition of the milestone achieved by The Elephant Sanctuary in Tennessee, caring for retired captive elephants since 1995, the state of Tennessee, Lewis County, and the city of Hohenwald declared October 2020 "Elephant Awareness Month." Governor Bill Lee, Lewis County Mayor Jonah Keltner, and Hohenwald Mayor Danny McKnight signed official proclamations stating, "In 2020,

The Sanctuary is celebrating 25 years of providing a safe haven and natural habitat refuge dedicated to the well-being of retired captive elephants and educating the public about the needs of elephants in captivity and the crisis facing elephants in the wild."

To bring greater awareness to The Sanctuary's mission and the crisis facing elephants in the wild, The Sanctuary launched a social media campaign, including a series of Facebook photo frames. Information on the need for conservation and ways to support current conservation efforts were shared throughout the month.

Stay up-to-date with the latest Sanctuary happenings by following us on social media:



facebook.com/elephantsanctuarytn



twitter.com/elephantstn



instagram.com/theelephantsanctuary



youtube.com/elephantsanctuarytn



The Elephant Discovery Center has re-opened to the public Thursday – Saturday, 10 a.m. – 3 p.m., by appointment only with safety guidelines in place. You may call 931-796-6500 x109 or email Joy Owens at jowens@elephants.com in advance to check availability and schedule your visit.



MINNIE

» Support An Elephant

GIVE THE GIFT OF SANCTUARY

Donations of any amount — investments in our mission from long-standing supporters and brand new Shirley fans, alike — help equip The Elephant Sanctuary with the necessary resources to provide gold-standard care to our resident elephants and those to come. When you make a one-time donation online or by mail, you give the gift of Sanctuary and contribute to the large, sometimes unexpected expenses that come with providing refuge to aging elephants. Every dollar counts in creating the best environment for elephants here in Tennessee and improving the lives of elephants worldwide through expanded education and awareness of their needs.

Become a Sustaining Donor for as little as \$10+ per month by setting up an automatic, recurring gift to The Sanctuary.

Your dedication to the continued care of captive elephants and the future generations hoping to share a world with elephants makes you eligible to apply for a Volunteer Day. Sustaining Donors also receive a one-year subscription to our triannual newsletter, *Trunklines*.

If you wish to set up a bank draft instead of a monthly credit card payment, please contact Kathy at 931-796-6500 ext. 107.

FUNDRAISE FOR ELEPHANTS

Turn your next special occasion (birthday, marathon, wedding, graduation, anniversary, or “just because!”) into a chance to raise support for The Elephant Sanctuary! When you start a peer fundraising campaign — which takes just a minute to set up online with a name, photo and brief “call to action” — you can reach your elephant-loving friends with the mission of The Sanctuary and invite them to participate in changing the lives of the elephants here in Tennessee. Visit shop.elephants.com/create-a-fundraiser to get started.

Dedicate Your Gift:

For a unique gift to celebrate special days or to express sympathy and cherished memories, consider making a donation to The Elephant Sanctuary “In Honor” or “In Memory” of a loved person or pet. Visit shop.elephants.com to learn more.

Other Ways To Give:

To learn more about The Sanctuary’s VIP Membership Program and Shirley’s Legacy Program, contact lorenda@elephants.com or 931-796-6500 ext. 105.

Wishlist:

The Sanctuary maintains an ever-changing wish list to meet the needs of the elephants in our care. Visit shop.elephants.com/products/wishlist to see an updated list of needs.

BECOME A MEMBER

The Elephant Sanctuary provides a sprawling refuge for elephants retired from performance and exhibition — a three-habitat property where they can express natural behaviors, enjoy the companionship of other elephants, and receive a lifetime of individualized care. **Join our herd as a Member with a donation of \$50 or more and receive:**

- A one-year subscription to our triannual newsletter, *Trunklines*
- A one-time 10% discount on Gift Shop apparel
- Monthly *EleNews* email updates
- Eligibility to apply for a Volunteer Day in Hohenwald

ADOPT AN ELEPHANT

By adopting one (or more) of The Sanctuary’s 11 elephants, you become a partner in our mission to provide the gift of herd, home, rest, refuge, and individualized care for life. **Make a gift of \$50+ to Adopt An Elephant and receive:**

- A Certificate of Adoption and information on your “adoptee”
- Monthly *EleNews* email updates
- Eligibility to apply for a Volunteer Day in Hohenwald
- The latest issue of our triannual newsletter, *Trunklines*

FEED AN ELEPHANT

Each of The Sanctuary’s resident elephants consumes about 150 lbs. of food each day, which costs approximately \$50 per elephant. To ensure a nutritious and balanced diet for each of these elephants, our Veterinary Team and Caregivers portion out hay, browse, fresh produce, and supplements according to the individual needs and preferences of the aging elephants. **When you help us offset these ongoing costs and give \$50+ to Feed An Elephant, you receive:**

- A photo card with information about elephants’ diets plus access to “ele-inspired” plant-based recipes, updated seasonally
- Monthly *EleNews* email updates
- Eligibility to apply for a Volunteer Day in Hohenwald
- The latest issue of our triannual newsletter, *Trunklines*

GIVE NOW AT SHOP.ELEPHANTS.COM OR VIA THE ENCLOSED FORM AND ENVELOPE.

Elephant Sanctuary Merchandise



Adult T-Shirts

\$24.95

SM, MED, LG, XL, XXL, XXXL

This worn-in vintage-inspired unisex T-shirt is made in the USA from 100% soft-spun cotton. The Elephant Sanctuary logo is printed on the back.



Nosey T-Shirt
Color: Periwinkle



Flora T-Shirt
Color: Poppy



Tange T-Shirt
Color: Navy



Sukari T-Shirt
Color: Khaki



Shirley T-Shirt
Color: Ice Blue



Tarra T-Shirt
Color: Brick



Ronnie T-Shirt
Color: Seafoam



Debbie T-Shirt
Color: Wine



Sissy T-Shirt
Color: Royal Caribbean



Minnie T-Shirt
Color: Yam



Billie T-Shirt
Color: Blue Spruce



Elephants Shape Our World Youth T-Shirt
\$18.95

XS, SM, MED, LG

This youth T-shirt distinguishes your child as part of a global herd of elephant lovers. Made by Gildan, this 100% cotton T-shirt is perfect for playtime.



Long Sleeve T-Shirt
\$28.95

SM, MED, LG, XL, XXL, XXXL

Made by Comfort Colors from 100% ring spun cotton, this comfy long sleeve shirt has The Elephant Sanctuary logo on the chest in white and the URL on the back.



NEW!

Pura Vida Bracelet
\$12.00

Show your love for elephants with Pura Vida's Save the Elephants Charm bracelet! Founded in Costa Rica, Pura Vida provides sustainable jobs to artisans worldwide and raises awareness for charities with products that give back. Green wax-coated string with rhodium-plated brass elephant charm. Adjustable from 2-5 inches in diameter.



NEW!

Boxed Postcard Set + Calendar Card
\$12.00

Boxed set of 12 cards: 11 5x7 postcards featuring each of our resident elephants and one card with 2021 calendar included.



Reusable Stainless Steel Straws
\$12.00

Stainless steel straw set in a custom biodegradable drawstring pouch featuring The Sanctuary's logo. Contains two straight straws, two curved straws, and a cleaning brush.



The Elephant Sanctuary Roast by Bongo Java
\$15.00

1 lb 'Made in the Shade' whole bean, dark roast coffee by Bongo Java, with smokey, nutty notes and a heavy body. 100% Organic, 100% Fair Trade, 100% Shade-Grown.

Find all your Elephant Sanctuary merchandise at elephants.com, or place your order using the enclosed order form and envelope.



P.O. BOX 393
HOHENWALD, TENNESSEE 38462
ELEPHANTS.COM
931-796-6500



Elephant Health Care Center Update

At the time of this writing, the majority of the Elephant Health Care Center (EHCC) construction is on track to be completed in 2020. As previously reported, the vet lab/meeting space and two-stall elephant barn structures were raised this summer, and the mechanical, electrical, radiant heating, and plumbing work has since been installed in these buildings. The interior furnishings, such as windows, cabinetry, and counter tops, are also close to finished.

The EHCC complex was designed to enhance the work of our Veterinary Team, which can lead closer observation of and additional in-house diagnostics for elephants, and to also host visiting experts collaborating with our staff to learn more about geriatric elephant care. We are so excited to unveil the final EHCC, once operational, and we are grateful for all of the individual donors and foundations that made this project possible.

Connect with us Online at **elephants.com!**

Stay current on news from The Sanctuary and support the wellbeing of captive elephants through your favorite social networks. You can also sign up to receive our free monthly online newsletter, *EleNews*, which includes information on special events, merchandise, and new posts to our blog.



Awards and Recognition

Our strong performance as an animal welfare/wildlife conservation 501(c)(3) non-profit is recognized by reputable charity monitoring groups.



Global Federation of
Animal Sanctuaries

ASSOCIATION
OF ZOOS &
AQUARIUMS

The Elephant Sanctuary in Tennessee is proudly accredited by the Global Federation of Animal Sanctuaries and certified by the Association of Zoos and Aquariums.

Trunklines is printed on paper certified by both the Rainforest Alliance and the Forest Stewardship Council. FSC wood products are known to prevent decimation of forests located in or near native habitats for wild elephants.

Please be a conscious consumer—look for FSC, Rainforest Alliance, and RSPO seals.

