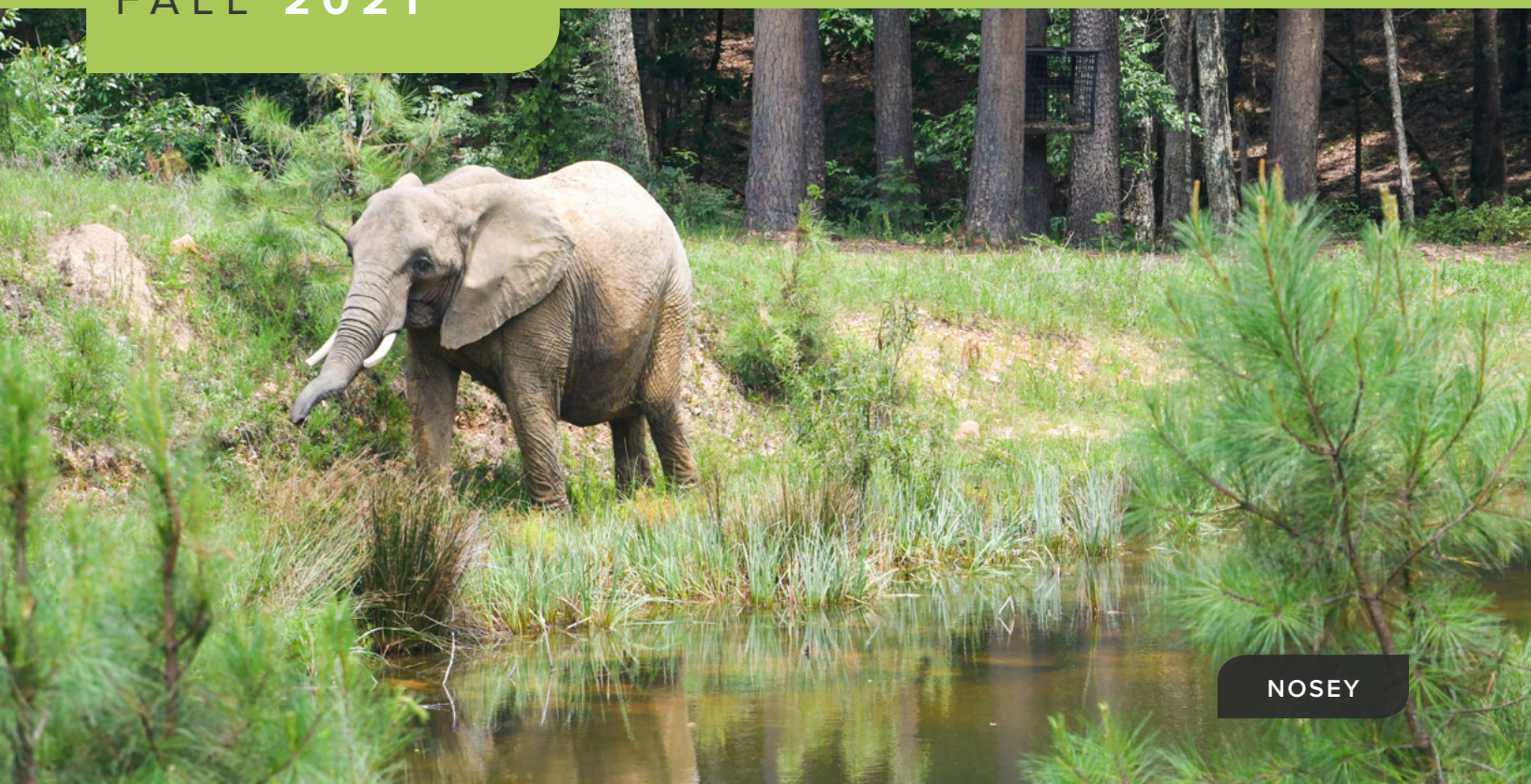


TRUNK LINES

FALL 2021

**THE ELEPHANT
SANCTUARY**
IN TENNESSEE™



NOSEY

Inside The Sanctuary

With fall upon us, Care Staff have prepared the barns for the cooler days ahead. Fresh sand has been added to the stalls and new enrichments await discovery. Meanwhile, **Minnie, Ronnie, Billie**, and all of the elephants have been exploring among the brilliantly colorful forests and yellow flowers that fill The Sanctuary's meadows this time each year.

We are happy to announce that construction of our on-site **Elephant Health Care Center is complete**. This state-of-the-art veterinary facility, with in-house diagnostic capabilities, will allow us to better meet the growing needs of the elephants as they age and will also serve as a meeting space for elephant care professionals to share knowledge that will advance the future of elephant care around the world.

ELEPHANT HEALTH CARE CENTER



In This Issue

CEO Letter.....	2
Nosey Updates.....	3
Africa Habitat & Barn.....	4
Q Habitat & Barn.....	6
Asia Habitat & Barn.....	8
Year End Campaign.....	10
Have You Herd?	12
Support an Elephant.....	14
Merchandise.....	15

More updates from The Elephant Sanctuary are included in this new fall issue of *Trunklines*.



Observe the elephants via
The Sanctuary's live-streaming
EleCams at [elephants.com](https://www.elephants.com).

The Elephant Sanctuary is a 501(c)(3) nonprofit corporation, licensed by the U.S. Dept. of Agriculture and the Tennessee Wildlife Resources Agency, accredited by the Global Federation of Animal Sanctuaries, and certified by the Association of Zoos and Aquariums.

Financial statements are available for review at elephants.com.

P.O. Box 393
Hohenwald, TN 38462
Phone: 931.796.6500
Fax: 931.796.1360
Email: elephant@elephants.com

OUR MISSION

Founded in 1995, The Elephant Sanctuary in Tennessee is the nation's largest natural-habitat refuge developed specifically around the needs of Asian and African elephants retired from performance and exhibition. It operates on 3,060 acres in Hohenwald, Tenn. — 85 miles southwest of Nashville.

With Your Support, The Elephant Sanctuary:

- Provides captive elephants with individualized care, the companionship of a herd, and the opportunity to live out their lives in a safe haven dedicated to their wellbeing;
- Raises public awareness of the complex needs of elephants in captivity, and the crisis facing elephants in the wild.

As an accredited sanctuary, the habitat where the elephants live is not open to the public.

To learn more about The Elephant Sanctuary and its resident elephants, connect with us online at elephants.com.

LETTER FROM OUR CEO

Dear Friends,

In what has turned out to be another year filled with extraordinary challenges, we are very happy to report that Sukari, Flora, Tange, Minnie, Billie, Ronnie, Debbie, Nosey, Tarra, and Sissy have continued their travels throughout their expansive habitats — swimming, mudding, browsing, and grazing. They have spent time together and taken time out to be alone. Your generosity provides them this life in Sanctuary where they can explore their autonomy. In Sanctuary, they can simply be elephants, thanks to you!

Your commitment to our mission ensures that the elephants are safe and provided great care. At a time when the world around us continues to struggle with the impact of COVID-19, the rise of the Delta variant, and the realities of a changing climate, we are all investing in the future care and well-being of these remarkable creatures. This includes planning for sustainability of The Sanctuary, the elephants' home for life. The big news is that our long-awaited Elephant Health Care Center (EHCC) is now fully operational! Centrally located between our three habitats and offering expanded in-house laboratory testing and diagnostics, the EHCC has already significantly improved the efficiency and capability of the veterinary department. The newly constructed adjacent barn is available for continuous care and close observation of any elephants with extenuating needs. The new offices and conference room are a welcome change from the "temporary" small trailer that was long home to our Veterinary Team. Dr. Steven Scott, Dr. Lydia Young, and Veterinary Services Manager and RVT, Eileen Keating, look forward to welcoming other professionals to this new facility to share knowledge that will help improve the lives of all elephants.

Another critical part of building a resilient and long-lasting home for the elephants is environmental sustainability. We have made an ongoing, concerted effort to minimize non-renewable energy consumption and reduce The Sanctuary's impact on the environment to protect the elephants entrusted in our care and the planet we share. A newly installed solar array at the EHCC provides grid tie solar and back-up solar for storage and onsite use. This is in addition to a larger solar array at Asia Barn that offsets 100% of the barn's annual electricity usage, an off-the-grid warming hut in Asia Habitat, solar waterers, and solar powered cameras — all reducing the need for generated electricity in remote areas of the habitats and all for the elephants.

Thank you for partnering with us. Thank you for all you do to provide a safe and sustainable lifetime home for our resident elephants and for those to come.

Janice Zeitlin
Janice Zeitlin, CEO



Thank you for supporting our mission!



NOSEY



» Nosey Updates

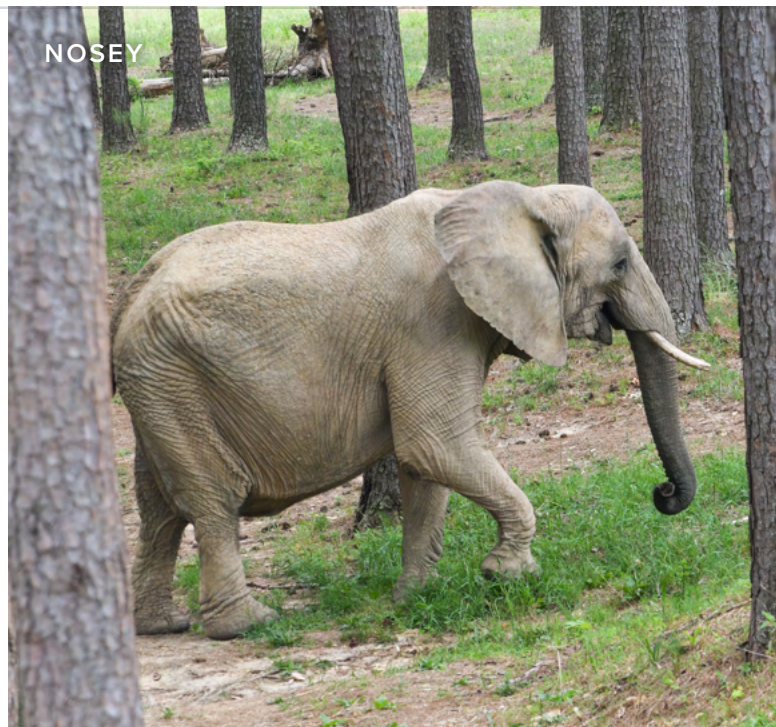
In Tennessee, we've continued to experience warm, sunny days throughout the fall, even as nights cool. And just as they do in the summer, Caregivers offer frequent garden hose baths to the elephants on warm-weather days. **Nosey**, somewhat reluctant at first, has become an eager participant. The cooling bath time often doubles as a socialization opportunity for the elephants. Caregivers have been delighted to see **Nosey** and **Tarra** choosing to take their baths together, standing on either side of the fence line, touching each other with their trunks throughout.

Since **Nosey** was introduced to **Tarra** and **Sissy** over a fence line earlier this year, Caregivers have continued to create socialization opportunities for the three elephants to continue to get to know one another and grow more comfortable in each other's presence. **Nosey** and **Tarra** have also been observed leaning against the same shared gate and resting together.

Much to everyone's delight, in late July, EleCams captured **Nosey** fully submerged in the pond for the first time! Since then, Caregivers have observed **Nosey** spending up to an hour at a time in the pond, splashing, throwing water on herself, dunking her head, and blowing bubbles — rain or shine.

"Seeing **Nosey** be able to be so carefree in the moment is yet another milestone in her growth at The Sanctuary!" — Sarah F., Asia Barn Lead

At night, **Nosey** has been making good use of the sand piles in her habitats. Trunk swirls and outlines of her body in the sand are a giveaway of her lying down to sleep on the sand, a sign that she is comfortable in her surroundings.





TANGE & SUKARI

» Africa Habitat & Barn

Flora, **Sukari**, and **Tange** have the freedom to choose where they explore and with whom, some days walking through the habitat individually and some days together. No matter where they may be within Africa Habitat's 113 acres, the three can call to one another through audible rumbles and trumpeting, as well as seismic vibrations in the ground. Recently, **Flora** and **Tange** were heard trumpeting through the habitat while ripping up and tossing small bushes and trees, throwing rocks, and turning in circles, seemingly excited about something they had discovered. **Sukari** heard their communications from afar and immediately made her way through the habitat to join them.

According to Dr. Joyce Poole and **ElephantVoices' Elephant Ethogram**, elephants can likely hear the vocal calls of another elephant from six miles away. When an elephant rumbles, a replica of the airborne sound is also transmitted through the ground via vibrations that are then detected in their feet or trunk; this signal can be received two miles away. In the wild, these long-distance messages play a crucial role in elephants' survival and reproductive success. At The Sanctuary, perhaps the elephants are sharing the discovery of a new mud wallow or delicious foliage.

FLORA

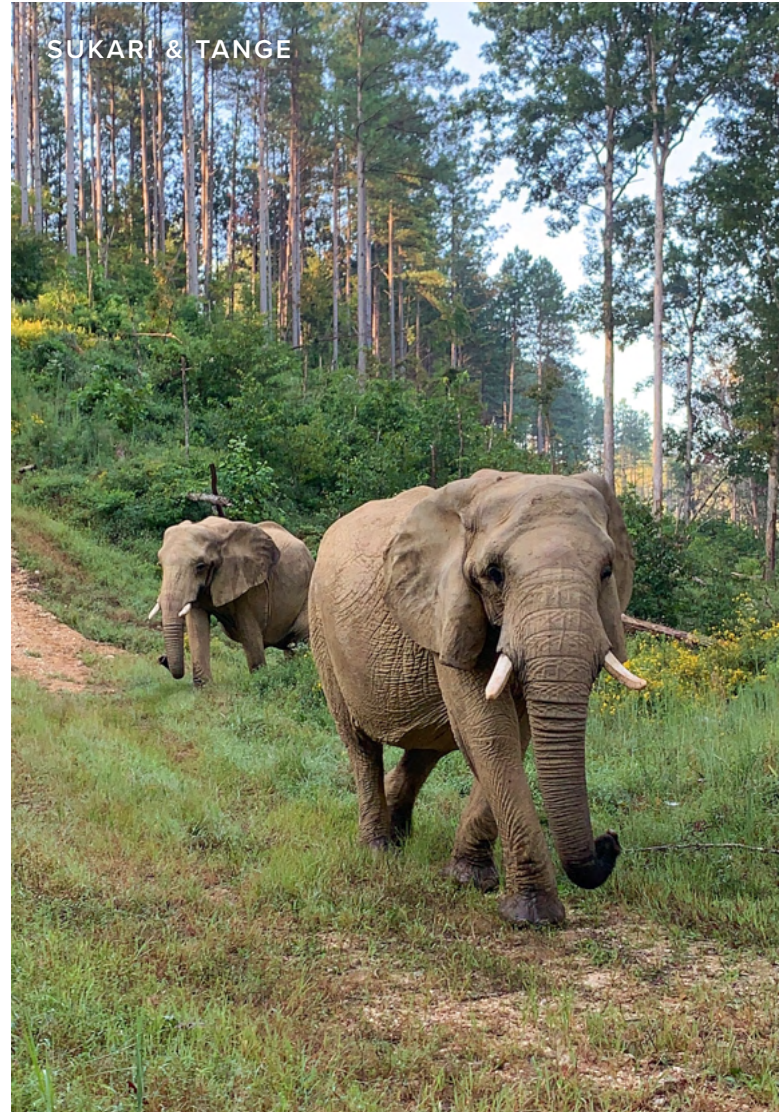




Late summer and fall have been filled with trips to the mud wallows, the perfect way to express some playful energy and cool off at the same time. **Flora** was spotted rolling around in the mud after a rainstorm, throwing it on herself and kneeling down on all fours to dig in the cool dirt. Warmer temperatures extend far into September here in Tennessee, so Caregivers also make sure to offer the elephants firehose baths (and inevitably lots of drinks of cold, refreshing water during the process).

While **Flora**, **Sukari**, and **Tange** continue to spend their days interacting with the vast habitat around them, Care Staff utilize this time of seasonal change to start preparing for winter, when the elephants will spend more time inside the barn. Caregivers have woven grapevine wreaths out of vines donated from the local winery, to be used for enrichment throughout the cooler months when less browse is readily available.

The Sanctuary's Facilities Team also installed a new pulley system above the stalls inside the barn to encourage the elephants to engage in natural foraging and reaching behaviors even while inside. Pulley systems offer a safe way to suspend enrichment items — such as hay barrels, foraging braids, tires, and browse — and require the elephants to raise their trunk to interact with the item, as they would do foraging for food in the wild. **Tange** was the first to test the new pulley, stretching her trunk to reach her breakfast hay one recent morning.





BILLIE

» Q Habitat & Barn

Changing seasons and changing weather can mean rain, and lots of it. For the elephants, that's just fine, as rain often turns dusty corners of the habitat into delightfully mushy mud! **Debbie** was observed playing in a patch of mud by the pond, even lying down and smushing her whole face and trunk into the muddy ground. In addition to helping to cool elephants' bodies in the summertime, mud provides a protective layer to shield their bodies from the sun's rays and insects.

A new water mister added to the Pond Yard habitat this summer has also been much used by the elephants. One day while **Debbie** was getting a foot check at a Protected Contact training wall, she angled her body so that the mist blew directly in her face. She closed her eyes and seemed very relaxed as the Caregivers completed her foot work and "pedicure."

Minnie and **Ronnie** were nearly inseparable throughout the summer, and that has continued into the fall. The pair often chooses to spend the day exploring their habitat side-by-side and will return to the barn together for training and special treats from their Caregivers.

Last June, Caregivers observed **Ronnie** demonstrating increased stiffness in her right front leg. The Sanctuary's Veterinary Team determined she had a partially torn tendon in her elbow and



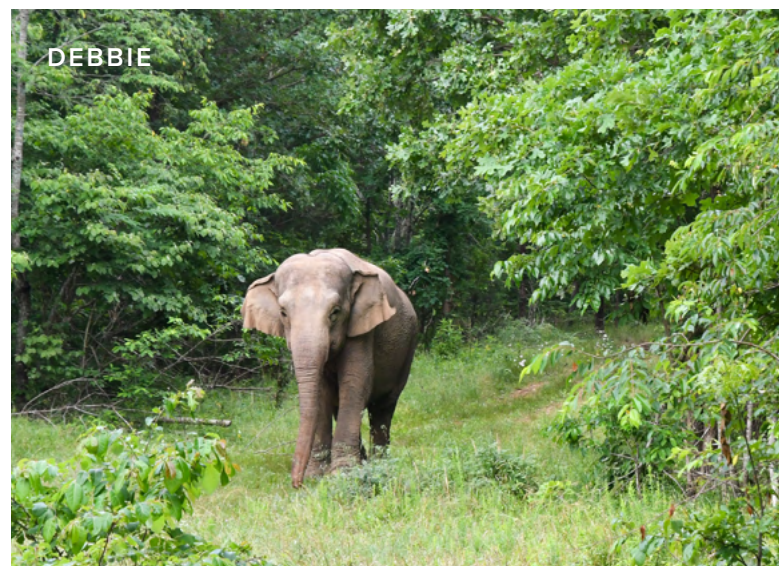
DEBBIE



implemented a treatment plan that included laser and massage therapy. **Ronnie's** Care Team has been looking for evidence that she was lying down to sleep overnight in the habitat, understanding that this could aid in her healing process. After some research, the team decided to apply a small pressure patch, originally designed for cows, to **Ronnie's** left hip. The patch changes color from white to pink when several hundred pounds of sustained pressure are applied. Using an epoxy utilized for veterinary applications, the patch remained on overnight and indeed, turned pink, confirming that **Ronnie** is lying down to sleep overnight when Caregivers don't have eyes or cameras focused on her.

The Sanctuary's Veterinary Department is always looking for new innovations to treat chronic issues that affect aging, captive elephants, especially their feet. A product originally developed to harden horse hooves was tried and was found to be very effective on **Billie's** sensitive feet, allowing her to comfortably explore farther areas of her habitat! **Billie** has also been observed recently going for a swim in the pond. She was seen wading, blowing bubbles, and splashing water all over herself.

With winter on its way, The Sanctuary's Facilities Team has worked diligently to prepare the barn for the elephants, who often choose to sleep indoors in cold-weather months. New rubber floors have been installed throughout Q Barn stalls, along with sand and sand piles, for the elephants' increased comfort.





SISSY & TARRA

» Asia Habitat & Barn

When the elephants in Asia Habitat spend time away from each other exploring and then come back together, they often treat it as a “reunion” — and these have been plentiful of late. Caregivers described a sweet reunion between companions **Tarra** and **Sissy** this fall after **Tarra** spent a couple of days at the lake. When **Tarra** returned to find **Sissy** in the Upper Habitat, the two erupted into vocalizations — rumbles, roars, and trumpets, and trunk pops. Both moved around each other quickly with excitement, touching one another with their trunks and tails and rubbing against each other.

Tarra, the social butterfly, engages in frequent socialization with **Nosey**, returning to **Nosey’s** area of the habitat often for visits over the fence line. The two have been sharing hay with one another, standing together for hours at a time. One afternoon, **Tarra** threw hay on her head and back; **Nosey** watched closely and then reached to scoop a trunk full of hay from **Tarra’s** head, claiming it as a snack of her own. Sometimes, **Sissy** joins them at the fence line, and all three will socialize, play in the mud, and eat meals together. Everyone at The Sanctuary is excited to provide opportunities like this for these intelligent, social animals.

SISSY





As always, **Tarra** has traveled far and wide through the habitat with **Sissy** and on her own, covering miles of terrain each week. She has resided at The Sanctuary since its founding, for over 26 years, and is familiar with many different corners of the 1,600-acre habitat. Over the course of several days, she might be discovered at Secluded Pond, Turtle Pond Pasture, Marcella's, The Gauntlet, Hidden Pond, the lake, and the warming hut! Asia Habitat's off-the-grid warming hut utilizes solar power to maintain a consistent inside temperature, so although it was constructed to provide a warm shelter out in the habitat for the elephants during the cooler months, it also works to provide them a cool shady space during the warmer months.

Sissy has been quite adventurous too, visiting the warming hut herself, wallowing at Marcella's, napping in the many wooded areas of the large habitat, and visiting Sleepy Spot, a favorite nap location of much loved and missed **Shirley**. Caregivers deliver meals to the elephants twice daily at the fence line nearest where they have chosen to explore for the day. Although the elephants leave behind clues of their whereabouts in the form of footprints, dung, and broken tree limbs, sometimes they take unexpected paths through the woods to discover completely new-to-them locations. This certainly keeps Caregivers busy, but they truly appreciate seeing the elephants use so much of their vast habitat space.



2021 YEAR END CAMPAIGN

YOUR INVESTMENT MEANS INNOVATIONS FOR ELEPHANTS

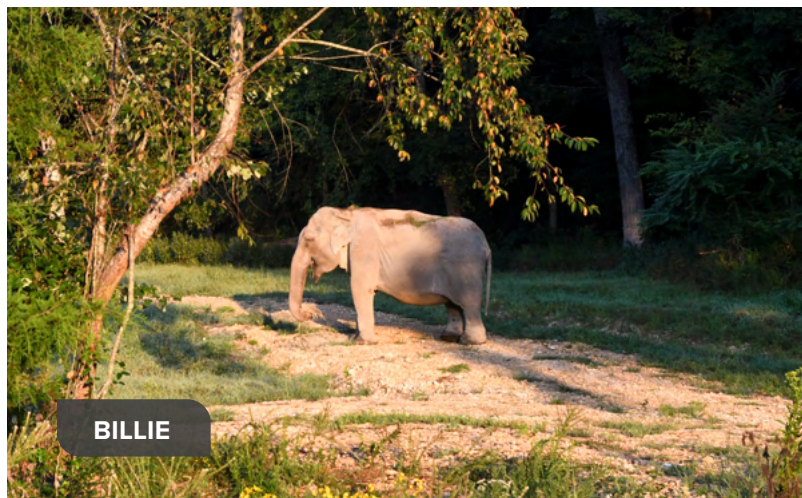


TANGE

» In 1973, African elephant Tange was born wild in Zimbabwe.

At five years old, she was orphaned and captured in a government culling of elephant herds, then transported to Chehaw Wild Animal Park in Georgia. There she lived for 26 years with another orphaned elephant, **Zula**, before both elephants were retired by the zoo director and transferred to The Elephant Sanctuary in Tennessee in 2004. **Flora** followed shortly thereafter, beginning the African herd in Hohenwald. **Since that time, The Sanctuary has welcomed seven African elephants (and 21 Asian elephants), and Tange has always been part of the welcoming committee, helping newcomers develop confidence to explore, socialize, and exhibit natural behaviors in their Sanctuary home.**

In the expanded habitats of The Elephant Sanctuary — which began on 110 acres in 1995 and now comprises 3,060 acres of rolling hills, pastures, and forest in a rural area 85 miles southwest of Nashville — a team of skilled Caregivers and Veterinary staff constantly educate each other and innovate new solutions to provide individualized care for 10 elephants. All past and present elephant residents here, **28 Asian and African elephants** in The Sanctuary's 26-year history, arrived at their new home with varying social, psychological, and physical issues common to elephants that have spent a life in captivity.



BILLIE

The Elephant Health Care Center, built to increase our Veterinary Team's capacity and meet the growing needs of geriatric elephants in a centrally located laboratory and barn complex, **was made possible through the generosity of more than 1,800 donors.** And with recognition and respect for a changing climate, a solar panel array atop the barn powers movable elephant gates, as well as world class diagnostic equipment in the lab, allowing The Sanctuary to stay prepared to welcome any elephant in need of refuge.

YOUR PARTNERSHIP ENSURES OUR ABILITY TO PROVIDE FOR OUR CURRENT RESIDENTS AND THOSE TO COME.

» Providing home, herd, rest, and refuge takes more than just The Sanctuary's Elephant Care Team.

Our Facilities Team constantly maintains Sanctuary property to keep it safe, nurturing, and stimulating for the elephant residents — digging mud wallows and blazing trails for elephants like **Sissy** to reach more distant parts of her habitat, repairing fences, and building enrichment devices.

Simultaneous with advancements in elephant wellness inside The Sanctuary, our trained educators take remote learning to new levels, using virtual platforms to connect with students, families, and organizations in countries all over the globe. **We also gratefully welcome visitors to The Elephant Discovery Center in Hohenwald** to share more about African and Asian elephants, and how our individual actions can help to make a better world for these species.

Meanwhile, we continue to expand and deepen our conservation efforts around the world, supporting 10 international partners

pursuing projects like *The Elephant Ethogram*, ElephantVoices' multimedia catalog of African elephant behaviors, and the opening of Europe's first sanctuary for elephants, Elephant Haven in France.

It is because of your support of our mission that The Elephant Sanctuary's impact extends so far beyond Middle Tennessee, and we can celebrate, as a global community of advocates, improvements to the lives of elephants everywhere.



Gifts to our 2021 Year End Campaign

Your investments allow for The Sanctuary's adaptations for elephants, like:



\$50

Elephant foot care supplies



\$100

Four bags of Mazuri feed for elephants



\$250

Hay cage



\$500

Two-way radio



\$1000

Seven linear feet of elephant fencing



\$2000

Camera used to view the elephants

Giving online is easy and secure at elephants.com

Click "Donate" and make a gift to our "Year End Campaign" by December 31st!



CLASSROOM PARTICIPATES IN DISTANCE LEARNING

» Have You Herd?

Fourth graders in Georgia's Cherokee School District kick off each school year by reading *The One and Only Ivan* by Katherine Applegate and connecting with The Elephant Sanctuary via live virtual field trips. This district-wide English Language Arts curriculum explores the complex needs of animals in captivity through the life stories of Ivan, the real-life gorilla who lived at Zoo Atlanta, as well as The Sanctuary's elephant residents. Each student writes an opinion essay discussing captivity based on their readings, research, and discussions with Sanctuary Staff. In all, The Sanctuary's Education Team hosted 22 virtual field trips with students across the Cherokee School District in 2021, reaching 785 students.

"When I discovered The Elephant Sanctuary through Skype in the Classroom, I immediately knew this would help my students understand that there are places out there that help animals, and also someone who can answer their burning questions. The Elephant Sanctuary can do both and SO much more! I am so grateful for the time you give to my class each year and for the patient answers you give to my students that help them construct an essay using your words and quotes," Cherokee School District teacher Samantha Westerlind said.

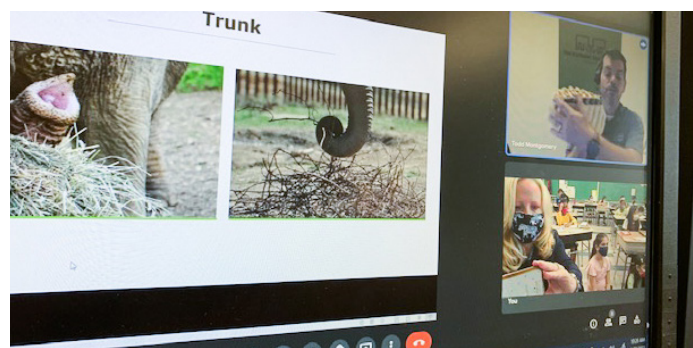
Virtual field trip dates are still available for the fall. Whether you want your students to learn about animals in captivity or if you have science curriculum goals you want to meet, The Sanctuary's Education Team will work with you to provide the best experience possible

for your students. You can learn more and schedule your call at elephants.com/distance-learning.

The Elephant Sanctuary strives to provide learning experiences that last beyond the classroom and the success of the program can be seen in the feedback from our repeat teachers like Westerlind.

"Many of my students come and visit my class after they have left and have told me it was a big highlight of their year," Westerlind said. "Some have gone on to say that they want to volunteer for The Sanctuary when they get older."

Contact Education Coordinator Laura Roddy for any questions about how your school can connect with The Elephant Sanctuary at laura@elephants.com.



» On The Sanctuary's Bookshelf



SOON

Soon by Timothy Knapman
PreK – 1st grade

Follow Raju and his mother on their grand adventure and learn just how far a mother will go to protect her calf.



THIRSTY, THIRSTY ELEPHANTS

Thirsty, Thirsty Elephants by Sandra Markle
2nd – 5th grade

Based on a true story of elephants in Tanzania during a 1994 drought, *Thirsty, Thirsty Elephants* tells the story of a herd working together for survival and offers meaning to the age old phrase “an elephant never forgets.”



THE ONE AND ONLY IVAN

The One and Only Ivan by Katherine Applegate
4th – 7th grade

Ivan the gorilla and his elephant friends, Stella and Ruby, spend their days in small rooms entertaining visitors in a run-down mall. Together, they begin to wonder if there is a more suitable home for them somewhere.



LEAVING TIME

Leaving Time by Jodi Picoult
Adult

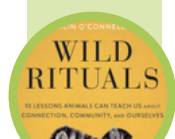
A devoted mother, loving wife, and accomplished scientist who studied grief among elephants has been missing for a decade under mysterious circumstances, leaving behind her small daughter, husband, and the animals to which she devoted her life.



LAST CHAIN ON BILLIE

Last Chain on Billie by Carol Bradley
Adult

Last Chain on Billie charts the history of elephants in America, the mission and work of The Elephant Sanctuary, and the life of a resilient elephant who defied the system, Billie.



WILD RITUALS

Wild Rituals by Caitlin O'Connell
Adult

Behavioral ecologist and world-renowned elephant scientist Caitlin O'Connell explores the rituals of elephants, apes, zebras, rhinos, lions, whales, flamingos, and many more.

A WORLD FOR ELEPHANTS

The Elephant Sanctuary connects with the global elephant community to

- Promote best practices in management, treatment, and care of captive elephants
- Create a world where elephants no longer live under the constant threat of poaching, habitat loss, conflict, or capture

THE THREATS FACING ELEPHANTS



Explore the map to learn how our partners are working to help elephants worldwide.



CLYDE GRANZEIER

Supporter Spotlight

Clyde Granzeier, EleAmbassador

Now a freshman at the University of Michigan, Clyde Granzeier's involvement with The Sanctuary dates back to the seventh grade, when he was challenged as part of a class project to raise awareness and funds for an organization that garnered his interest. A lifelong elephant lover, Clyde knew he wanted to support The Elephant Sanctuary. “I decided on a system that would become the model for all of my fundraisers over the next few years: the EleGram,” says Clyde. People could buy an elephant-themed note and address to someone else in the school, to be delivered by Clyde and accompanied by a piece of candy.

It was a hit and was repeated year after year. Clyde arranged for The Sanctuary to provide Distance Learning webinars for himself and his classmates. Clyde's senior year was virtual, but, undeterred, he was able to deliver webinars about The Sanctuary to classes at his school. Clyde (and his very supportive parents) also volunteered their time to staff exhibit booths at Ten Thousand Villages in nearby Ann Arbor, MI, and they participated in Volunteer Days at The Sanctuary. In Clyde's own words, “I learned that oftentimes, the best way to reach people is through demonstrating why you are passionate about something by showing what makes the topic so special to you.”



CLYDE IN 7TH GRADE



BILLIE

» Support An Elephant

GIVE THE GIFT OF SANCTUARY

Donations of any amount — investments in our mission from long-standing and brand new supporters, alike — help equip The Elephant Sanctuary with the necessary resources to provide gold-standard care to our resident elephants and those to come. When you make a one-time donation online or by mail, you give the gift of Sanctuary and contribute to the large, sometimes unexpected expenses that come with providing refuge to aging elephants. Every dollar counts in creating the best environment for elephants here in Tennessee and improving the lives of elephants worldwide through expanded education and awareness of their needs.

Become a Sustaining Donor for as little as \$10+ per month by setting up an automatic, recurring gift to The Sanctuary. Your dedication to the continued care of captive elephants and the future generations hoping to share a world with elephants makes you eligible to apply for a Volunteer Day. Sustaining Donors also receive a one-year subscription to our triannual newsletter, *Trunklines*.

If you wish to set up a bank draft instead of a monthly credit card payment, please contact Kathy at **931-796-6500 ext. 107**.

FUNDRAISE FOR ELEPHANTS

Turn your next special occasion (birthday, marathon, wedding, graduation, anniversary, or “just because!”) into a chance to raise support for The Elephant Sanctuary! When you start a peer fundraising campaign — which takes just a minute to set up online with a name, photo and brief “call to action” — you can reach your elephant-loving friends with the mission of The Sanctuary and invite them to participate in changing the lives of the elephants here in Tennessee. Visit shop.elephants.com/create-a-fundraiser to get started.

Dedicate Your Gift:

For a unique gift to celebrate special days or to express sympathy and cherished memories, consider making a donation to The Elephant Sanctuary “In Honor” or “In Memory” of a loved person or pet. Visit shop.elephants.com to learn more.

Other Ways To Give:

To learn more about The Sanctuary’s VIP Membership Program and Shirley’s Legacy Program, contact lorenda@elephants.com or **931-796-6500 ext. 105**.

Wishlist:

The Sanctuary maintains an ever-changing wish list to meet the needs of the elephants in our care. Visit shop.elephants.com/products/wishlist to see an updated list of needs.

BECOME A MEMBER

The Elephant Sanctuary provides a sprawling refuge for elephants retired from performance and exhibition — a three-habitat property where they can express natural behaviors, enjoy the companionship of other elephants, and receive a lifetime of individualized care. **Join our herd as a Member with a donation of \$50 or more and receive:**

- A one-year subscription to our triannual newsletter, *Trunklines*
- A one-time 10% discount on Gift Shop apparel
- Monthly *EleNews* email updates
- Eligibility to apply for a Volunteer Day in Hohenwald

ADOPT AN ELEPHANT

By adopting one (or more) of The Sanctuary’s elephants, you become a partner in our mission to provide the gift of herd, home, rest, refuge, and individualized care for life. **Make a gift of \$50+ to Adopt An Elephant and receive:**

- A Certificate of Adoption and information on your “adoptee”
- Monthly *EleNews* email updates
- Eligibility to apply for a Volunteer Day in Hohenwald
- The latest issue of our triannual newsletter, *Trunklines*

FEED AN ELEPHANT

Each of The Sanctuary’s resident elephants consumes about 150 lbs. of food each day, which costs approximately \$50 per elephant. To ensure a nutritious and balanced diet for each of these elephants, our Veterinary Team and Caregivers portion out hay, browse, fresh produce, and supplements according to the individual needs and preferences of the aging elephants. **When you help us offset these ongoing costs and give \$50+ to Feed An Elephant, you receive:**

- A photo card with information about elephants’ diets plus access to “ele-inspired” plant-based recipes, updated seasonally
- Monthly *EleNews* email updates
- Eligibility to apply for a Volunteer Day in Hohenwald
- The latest issue of our triannual newsletter, *Trunklines*

GIVE NOW AT SHOP.ELEPHANTS.COM OR VIA THE ENCLOSED FORM AND ENVELOPE.

The Elephant Sanctuary Merchandise



Adult T-Shirts

\$24.95

SM, MED, LG, XL, XXL, XXXL

This worn-in, vintage-inspired unisex T-shirt is made in the USA from 100% soft-spun cotton. The Elephant Sanctuary logo is printed on the back.

Due to low inventory from suppliers, we may be out of stock of some sizes, and colors may vary. For current colors and availability, visit shop.elephants.com. We apologize for the inconvenience!



Nosey T-Shirt

Flora T-Shirt

Tange T-Shirt

Sukari T-Shirt

Tarra T-Shirt



Ronnie T-Shirt

Debbie T-Shirt

Sissy T-Shirt

Minnie T-Shirt

Billie T-Shirt

Elephants Shape Our World

These items distinguish you as part of a global herd of elephant lovers!



Klean Kanteen \$36.95

A BPA-free, stainless steel 20 oz bottle with a wide Cafe Cap and a "bonus" Chug Cap! Co-branded with Klean Kanteen, this insulated bottle keeps contents hot or cold for hours, fits in most cup holders.



Youth T-Shirt \$18.95

XS, SM, MED, LG
Color: Light Blue

Made by Gildan, this 100% cotton T-shirt is perfect for playtime.



Onesie \$18.95

SM (6/12), MED (12/18), LG (18/24)
Color: White

Made in the USA from 100% organic cotton, this onesie includes 1/2" 3-snap closure and a satin label so as not to irritate.



Women's Find Your Herd T-Shirt \$24.95

Color: Ice Blue
SM, MED, LG, XL, XXL, XXXL

Looking for your herd? Find it in this new, 100% ring-spun cotton form-fitting "Find Your Herd" T-shirt. Soon to be your favorite tee. Runs small, size up for a less-fitted look.



Find Your Herd Long Sleeve T-Shirt \$28.95

Color: Athletic Heather
SM, MED, LG, XL, XXL, XXXL

This long-sleeve T-shirt distinguishes you as part of a global herd of elephant lovers. Made from a 90/10 cotton-poly blend, this shirt is 100% made in the USA.



Logo Zip-Up Hoodie \$42.00

Color: Black
SM, MED, LG, XL, XXL, XXXL

Ideal for all seasons, this extra-soft lightweight hoodie with pockets features The Elephant Sanctuary logo on the front.



The Elephant Sanctuary Roast by Bongo Java \$15.00

1 lb. 'Made in the Shade' whole bean, dark roast coffee by Bongo Java with smoky, nutty notes and a heavy body. 100% organic, fair trade, and shade grown.

Find all your Elephant Sanctuary merchandise at elephants.com, or place your order using the enclosed order form and envelope.



P.O. BOX 393
HOHENWALD, TENNESSEE 38462
ELEPHANTS.COM
931-796-6500

Connect with us Online at **elephants.com!**

Stay current on news from The Sanctuary and support the wellbeing of captive elephants through your favorite social networks. You can also sign up to receive our free monthly online newsletter, *EleNews*, which includes information on special events, merchandise, and new posts to our blog.



Awards and Recognition

Our strong performance as an animal welfare/wildlife conservation 501(c)(3) non-profit is recognized by reputable charity monitoring groups.



Global Federation of
Animal Sanctuaries

**ASSOCIATION
OF ZOOS &
AQUARIUMS**

The Elephant Sanctuary in Tennessee is proudly accredited by the Global Federation of Animal Sanctuaries and certified by the Association of Zoos and Aquariums.

Trunklines is printed on paper certified by both the Rainforest Alliance and the Forest Stewardship Council. FSC wood products are known to prevent decimation of forests located in or near native habitats for wild elephants.

Please be a conscious consumer—look for FSC, Rainforest Alliance, and RSPO seals.

